

S1V3F Manual errata

ITEM: Maximum recording data size			
Object manuals	Document codes	Items	Pages
S1V3F351 / S1V3F352 Technical Manual	414466900	8.2.1 SPI Interface	29
(Error) See Table 6.3 and Figure 6.3 for the SPI interface pin configuration and the connection with the host, respectively. The SPI interface in this IC can be used even if the #NSCSS pin is fixed at Low.			
(Correct) See Table 6.3 and Figure 6.3 for the SPI interface pin configuration and the connection with the host, respectively. The SPI interface in this IC can be used even if the #NSCSS pin is fixed at Low.			
Notes: Constraints on the SCKS of a message			
Please set the SCKS to 150kHz or higher when sending the following messages.			
•ISC_RESET_REQ			
•ISC_SLEEP_ENTRY_REQ			
•ISC_FLASH_PROGRAM_REQ:WriteFlash			
•ISC_FLASH_PROGRAM_REQ:WriteSettingsArea			
•ISC_FLASH_PROGRAM_STATUS_IND			
Please set the SCKS to 350kHz or higher when sending the following messages.			
•ISC_SOUND_RECORD_START_REQ			

S1V3F Manual errata

ITEM: Maximum recording data size			
Object manuals	Document codes	Items	Pages
S1V3F351 / S1V3F352 Technical Manual	414466900	7.2.1 Overview	24
<p>(Error)</p> <p>This IC is equipped with a sound recording function that records the sound input from the external microphone using the internal 12-bit AD converter and stores the recorded data to the external flash memory.</p> <p>The recording sound format is as follows:</p> <ul style="list-style-type: none">• PCM (uncompressed format)• Sampling frequency: 15.625 kHz• Quantization bit number: 16 bits• Maximum recording data size: 16M bytes (64K-byte steps)			
<p>(Correct)</p> <p>This IC is equipped with a sound recording function that records the sound input from the external microphone using the internal 12-bit AD converter and stores the recorded data to the external flash memory.</p> <p>The recording sound format is as follows:</p> <ul style="list-style-type: none">• PCM (uncompressed format)• Sampling frequency: 15.625 kHz• Quantization bit number: 16 bits• Maximum recording data size: 16M bytes 640K bytes (64K-byte steps)			

Object manuals	Document codes	Items	Pages
S1V3F351 / S1V3F352 Technical Manual	414466900	8.7 Sound Recording Function	61

(Error)

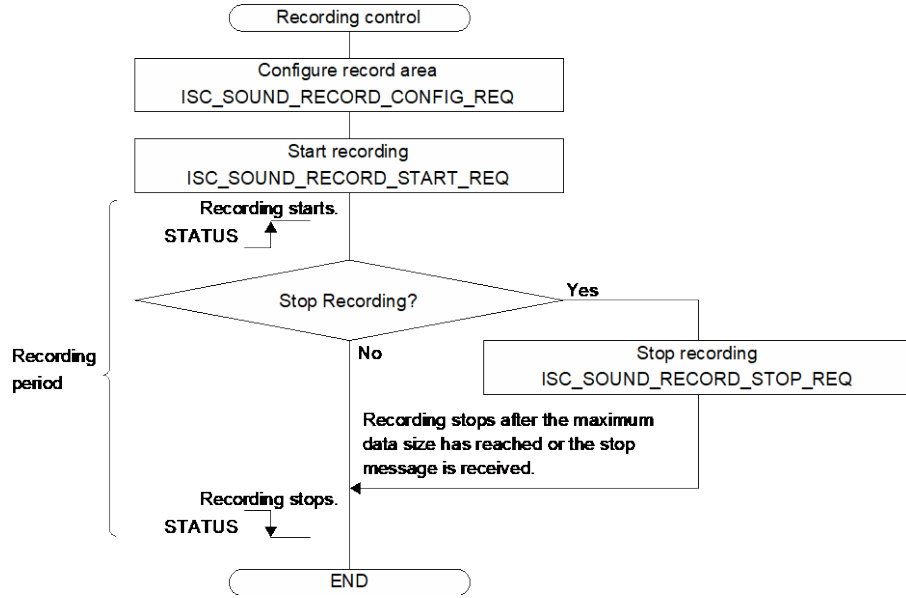


Figure 8.37 Sound Recording Control Flow

(Correct)

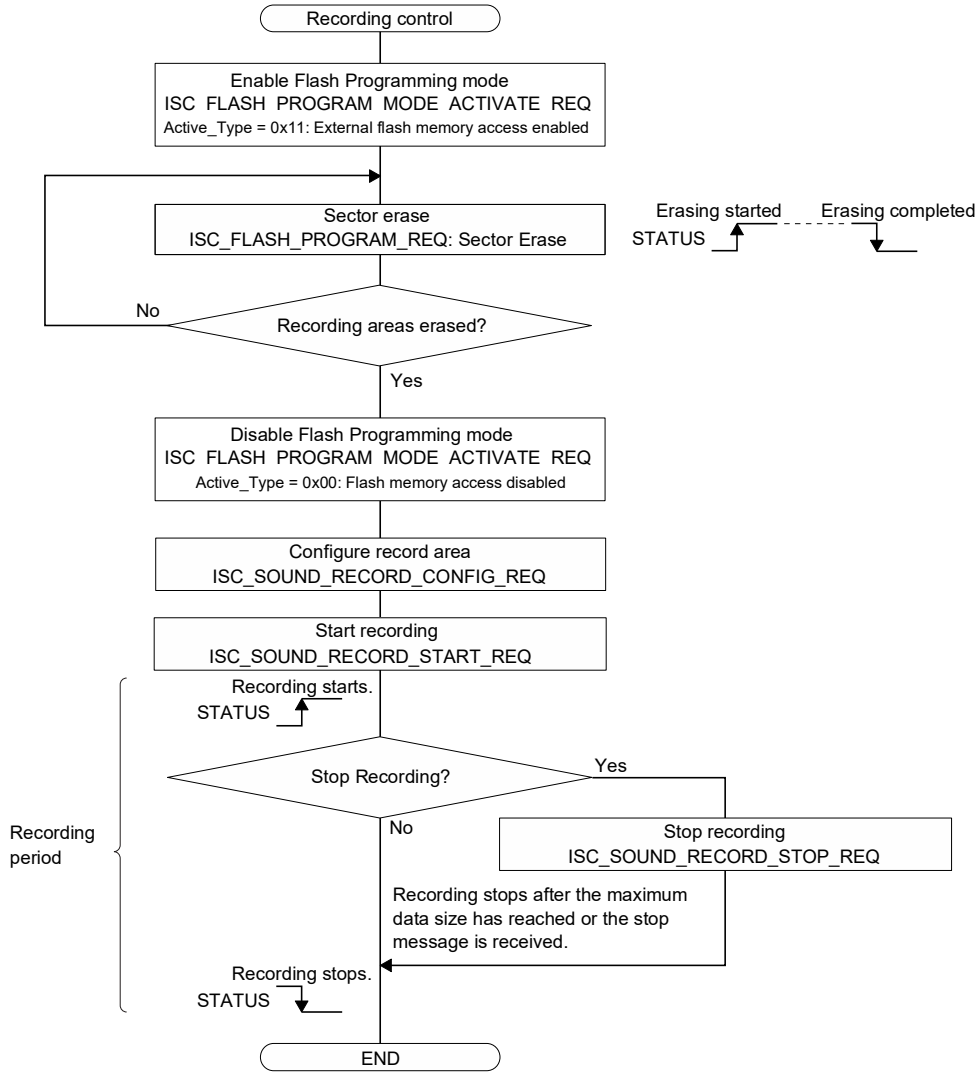


Figure 8.37 Sound Recording Control Flow

Object manuals	Document codes	Items	Pages
S1V3F351 / S1V3F352 Technical Manual	414466900	8.11.2 REQ Messages	76

(Error)

ISC_SOUND_RECORD_CONFIG_REQ

Direction	Byte No.	Field	Value	Description
Host → S1V	0	Msg_ID	0x14	ISC_SOUND_RECORD_CONFIG_REQ Configures the recording data area.
	1	Rec_Start_Addr[7:0]	<address[7:0]>	Recording data area start address
	2	Rec_Start_Addr[15:8]	<address[15:8]>	64K-byte boundary address in the external flash memory
	3	Rec_Start_Addr[23:16]	<address[23:16]>	
	4	Rec_Start_Addr[31:24]	<address[31:24]>	
	5	Max_Rec_Size[7:0]	<size[7:0]>	Maximum recording data size (64K-byte units)
	6	Max_Rec_Size[15:8]	<size[15:8]>	
	7	CRC	<CRC>	CRC value
S1V → Host	0	Receive_Status	<status>	Response byte to indicate receiving status

(Correct)

ISC_SOUND_RECORD_CONFIG_REQ

Direction	Byte No.	Field	Value	Description
Host → S1V	0	Msg_ID	0x14	ISC_SOUND_RECORD_CONFIG_REQ Configures the recording data area.
	1	Rec_Start_Addr[7:0]	<address[7:0]>	Recording data area start address
	2	Rec_Start_Addr[15:8]	<address[15:8]>	64K-byte boundary address in the external flash memory
	3	Rec_Start_Addr[23:16]	<address[23:16]>	
	4	Rec_Start_Addr[31:24]	<address[31:24]>	
	5	Max_Rec_Size[7:0]	<size[7:0]>	Maximum recording data size (64K-byte units)
	6	Max_Rec_Size[15:8]	<size[15:8]>	
	7	CRC	<CRC>	CRC value
S1V → Host	0	Receive_Status	<status>	Response byte to indicate receiving status

Note: The recording data storage area cannot be set to cross a 1MB boundary address.
For example, if you set the start address to 0x0F 0000 and the data size to 128KB,
the end address will be 0x10 FFFF, so please be aware that the storage area will cross the 1MB boundary.

Object manuals	Document codes	Items	Pages
S1V3F351 / S1V3F352 Technical Manual	414466900	9.2.1 List of Parameters	87

(Error)

バイト位置	パラメータ名	バイト数	説明	設定可能値 / 範囲	備考
119	StndalnSoundPitchLevellList	5	Pitch setting value for each playback pitch level	0x4B-0x7D 0x5A-0x6E when using with playback speed conversion	x5 params
124	IntSoundDataSize	4	Sound ROM data size in the embedded flash memory	S1V3F351: 0-0x10000 S1V3F352: 0-0x28000	[byte]
128	ExtSoundDataStartAddr	4	Sound ROM data start address in the external flash memory	0-0xF00000	[byte], 0x100000 (1 MB) steps
132	ExtSoundDataSize	4	Sound ROM data size in the external flash memory	0-0x1000000	[byte]
136	ExtFlsRecordDataStartAddr	4	Recording data area start address in the external flash memory	0-0xF00000	[byte], 0x100000 (1 MB) steps
140	ExtFlsRecordDataMaxSize	2	Maximum recording data size to store in the external flash memory	0-0xFF	x64K [byte]

(Correct)

バイト位置	パラメータ名	バイト数	説明	設定可能値 / 範囲	備考
119	StndalnSoundPitchLevellList	5	Pitch setting value for each playback pitch level	0x4B-0x7D 0x5A-0x6E when using with playback speed conversion	x5 params
124	IntSoundDataSize	4	Sound ROM data size in the embedded flash memory	S1V3F351: 0-0x10000 S1V3F352: 0-0x28000	[byte]
128	ExtSoundDataStartAddr	4	Sound ROM data start address in the external flash memory	0-0xF00000	[byte], 0x100000 (1 MB) steps
132	ExtSoundDataSize	4	Sound ROM data size in the external flash memory	0-0x1000000	[byte]
136	ExtFlsRecordDataStartAddr	4	Recording data area start address in the external flash memory	0-0xF00000	[byte], 0x100000 (1 MB) steps
140	ExtFlsRecordDataMaxSize	2	Maximum recording data size to store in the external flash memory	0-0xFF 0-10	x64K [byte]

Object manuals	Document codes	Items	Pages
S1V3F351 / S1V3F352 Technical Manual	414466900	9.2.5 Sound Recording Configuration Parameters	98

(Error)

Table 9.25 Sound Recording Configuration Parameters

Parameter name	Description	Byte length	Settable value	Unit
ExtFIsRecordDataStartAddr	Recording data area start address	4	0x000000–0xF00000 (0x100000 steps)	–
ExtFIsRecordDataMaxSize	Maximum recording data size	2	0x00–0xFF	x64K bytes

(Correct)

Table 9.25 Sound Recording Configuration Parameters

Parameter name	Description	Byte length	Settable value	Unit
ExtFIsRecordDataStartAddr	Recording data area start address	4	0x000000–0xF00000 (0x100000 steps)	–
ExtFIsRecordDataMaxSize	Maximum recording data size	2	0x00–0xFF 0x00–0x0A (0-10)	x64K bytes

S1V3F Manual errata

ITEM: Number of repeats when playing sound in standalone mode																					
Object manuals	Document codes	Items	Pages																		
S1V3F351 / S1V3F352 Technical Manual	414466900	1.1 Features	1																		
<p>(Error)</p> <p style="text-align: center;">Table 1.1 Features</p> <table border="1" style="width: 100%; border-collapse: collapse; background-color: #f2f2f2;"> <thead> <tr> <th colspan="2" style="text-align: left; padding: 5px;">Sound Processing Functions</th> </tr> </thead> <tbody> <tr> <td style="padding: 5px;">Sound mixing</td> <td style="padding: 5px;">2-channel mixing playback (e.g., Ch.0: Voice, Ch.1: BGM)</td> </tr> <tr> <td style="padding: 5px;">Playback speed conversion function</td> <td style="padding: 5px;">75% to 125% (5% steps), supported only in Ch.0</td> </tr> <tr> <td style="padding: 5px;">Playback pitch conversion function</td> <td style="padding: 5px;">75% to 125% (5% steps), supported only in Ch.0</td> </tr> <tr> <td style="padding: 5px;">Tone generation function</td> <td style="padding: 5px;">Patterned tone output with a combination of a maximum of four tone frequencies</td> </tr> <tr> <td style="padding: 5px;">Sound data protection</td> <td style="padding: 5px;">Available</td> </tr> <tr> <td style="padding: 5px;">Repeat playback</td> <td style="padding: 5px;">1 to 254 times or endless</td> </tr> <tr> <td style="padding: 5px;">Volume setting</td> <td style="padding: 5px;">0 dB to -63 dB (0.5 dB steps) or silence</td> </tr> <tr> <td style="padding: 5px;">Sound recording function</td> <td style="padding: 5px;">Usable when an external QSPI flash memory is connected</td> </tr> </tbody> </table>				Sound Processing Functions		Sound mixing	2-channel mixing playback (e.g., Ch.0: Voice, Ch.1: BGM)	Playback speed conversion function	75% to 125% (5% steps), supported only in Ch.0	Playback pitch conversion function	75% to 125% (5% steps), supported only in Ch.0	Tone generation function	Patterned tone output with a combination of a maximum of four tone frequencies	Sound data protection	Available	Repeat playback	1 to 254 times or endless	Volume setting	0 dB to -63 dB (0.5 dB steps) or silence	Sound recording function	Usable when an external QSPI flash memory is connected
Sound Processing Functions																					
Sound mixing	2-channel mixing playback (e.g., Ch.0: Voice, Ch.1: BGM)																				
Playback speed conversion function	75% to 125% (5% steps), supported only in Ch.0																				
Playback pitch conversion function	75% to 125% (5% steps), supported only in Ch.0																				
Tone generation function	Patterned tone output with a combination of a maximum of four tone frequencies																				
Sound data protection	Available																				
Repeat playback	1 to 254 times or endless																				
Volume setting	0 dB to -63 dB (0.5 dB steps) or silence																				
Sound recording function	Usable when an external QSPI flash memory is connected																				
<p>(Correct)</p> <p style="text-align: center;">Table 1.1 Features</p> <table border="1" style="width: 100%; border-collapse: collapse; background-color: #f2f2f2;"> <thead> <tr> <th colspan="2" style="text-align: left; padding: 5px;">Sound Processing Functions</th> </tr> </thead> <tbody> <tr> <td style="padding: 5px;">Sound mixing</td> <td style="padding: 5px;">2-channel mixing playback (e.g., Ch.0: Voice, Ch.1: BGM)</td> </tr> <tr> <td style="padding: 5px;">Playback speed conversion function</td> <td style="padding: 5px;">75% to 125% (5% steps), supported only in Ch.0</td> </tr> <tr> <td style="padding: 5px;">Playback pitch conversion function</td> <td style="padding: 5px;">75% to 125% (5% steps), supported only in Ch.0</td> </tr> <tr> <td style="padding: 5px;">Tone generation function</td> <td style="padding: 5px;">Patterned tone output with a combination of a maximum of four tone frequencies</td> </tr> <tr> <td style="padding: 5px;">Sound data protection</td> <td style="padding: 5px;">Available</td> </tr> <tr> <td style="padding: 5px;">Repeat playback</td> <td style="padding: 5px;">1 to 254 times or endless * 1 to 127 times for sound playback in standalone mode</td> </tr> <tr> <td style="padding: 5px;">Volume setting</td> <td style="padding: 5px;">0 dB to -63 dB (0.5 dB steps) or silence</td> </tr> <tr> <td style="padding: 5px;">Sound recording function</td> <td style="padding: 5px;">Usable when an external QSPI flash memory is connected</td> </tr> </tbody> </table>				Sound Processing Functions		Sound mixing	2-channel mixing playback (e.g., Ch.0: Voice, Ch.1: BGM)	Playback speed conversion function	75% to 125% (5% steps), supported only in Ch.0	Playback pitch conversion function	75% to 125% (5% steps), supported only in Ch.0	Tone generation function	Patterned tone output with a combination of a maximum of four tone frequencies	Sound data protection	Available	Repeat playback	1 to 254 times or endless * 1 to 127 times for sound playback in standalone mode	Volume setting	0 dB to -63 dB (0.5 dB steps) or silence	Sound recording function	Usable when an external QSPI flash memory is connected
Sound Processing Functions																					
Sound mixing	2-channel mixing playback (e.g., Ch.0: Voice, Ch.1: BGM)																				
Playback speed conversion function	75% to 125% (5% steps), supported only in Ch.0																				
Playback pitch conversion function	75% to 125% (5% steps), supported only in Ch.0																				
Tone generation function	Patterned tone output with a combination of a maximum of four tone frequencies																				
Sound data protection	Available																				
Repeat playback	1 to 254 times or endless * 1 to 127 times for sound playback in standalone mode																				
Volume setting	0 dB to -63 dB (0.5 dB steps) or silence																				
Sound recording function	Usable when an external QSPI flash memory is connected																				

Object manuals	Document codes	Items	Pages
S1V3F351 / S1V3F352 Technical Manual	414466900	9.2.1 List of Parameters	86

(Error)

Table 9.1 List of Parameters

Byte location	Parameter name	Byte length	Description	Configurable value / range	Remarks
0	Keycode ^(*)	4	Keycode value	0-0xFFFFFFFF	–
4	ManufacturerId	4	Manufacturer ID used for checking if the parameter information exists	0x30525345	A tag to identify the presence of the parameter information
...
64	StdalnRepeatCountCh0	15	Playback repeat count for each Ch.0 sentence number	0x00, 0x01: 1 time 0x02-0xFE: 2-254 times 0xFF: Endless	x15 params
79	Reserved	1	–	–	–
80	StdalnRepeatCountCh1	15	Playback repeat count for each Ch.1 sentence number	0x00, 0x01: 1 time 0x02-0xFE: 2-254 times 0xFF: Endless	x15 params
95	Reserved	1	–	–	–

(Correct)

Table 9.1 List of Parameters

Byte location	Parameter name	Byte length	Description	Configurable value / range	Remarks
0	Keycode ^(*)	4	Keycode value	0-0xFFFFFFFF	–
4	ManufacturerId	4	Manufacturer ID used for checking if the parameter information exists	0x30525345	A tag to identify the presence of the parameter information
...
64	StdalnRepeatCountCh0	15	Playback repeat count for each Ch.0 sentence number	Sentence Playback: 0x00, 0x01: 1 time 0x02-0x7F: 2-127times Tone Pattern Playback: 0x00, 0x01: 1 time 0x02-0xFE: 2-254 times 0xFF: Endless	x15 params
79	Reserved	1	–	–	–
80	StdalnRepeatCountCh1	15	Playback repeat count for each Ch.1 sentence number	Sentence Playback: 0x00, 0x01: 1 time 0x02-0x7F: 2-127times Tone Pattern Playback: 0x00, 0x01: 1 time 0x02-0xFE: 2-254 times 0xFF: Endless	x15 params
95	Reserved	1	–	–	–

Object manuals	Document codes	Items	Pages
S1V3F351 / S1V3F352 Technical Manual	414466900	9.2.3 Sound Playback Configuration Parameters	94

(Error)

Table 9.18 Playback Count Setting Parameters

Parameter name	Description	Byte length	Settable value	Unit
StndalnCh0RepeatCount[0]	Playback count for each sentence number / tone pattern number assigned to the #CH0_PLAY[3:0] input pins	1	0x00–0xFF	times
StndalnCh0RepeatCount[1]		1	0x00–0xFF	times
StndalnCh0RepeatCount[2]		1	0x00–0xFF	times
...	
StndalnCh0RepeatCount[14]		1	0x00–0xFF	times
StndalnCh1RepeatCount[0]	Playback count for each sentence number / tone pattern number assigned to the #CH1_PLAY[3:0] input pins	1	0x00–0xFF	times
StndalnCh1RepeatCount[1]		1	0x00–0xFF	times
StndalnCh1RepeatCount[2]		1	0x00–0xFF	times
...	
StndalnCh1RepeatCount[14]		1	0x00–0xFF	times

(Correct)

Table 9.18 Playback Count Setting Parameters

Parameter name	Description	Byte length	Settable value	Unit
StndalnCh0RepeatCount[0]	Playback count for each sentence number / tone pattern number assigned to the #CH0_PLAY[3:0] input pins	1	0x00–0x7F (Sentence Playback) 0x00–0xFF (Tone Pattern Playback)	times
StndalnCh0RepeatCount[1]		1	0x00–0x7F (Sentence Playback) 0x00–0xFF (Tone Pattern Playback)	times
StndalnCh0RepeatCount[2]		1	0x00–0x7F (Sentence Playback) 0x00–0xFF (Tone Pattern Playback)	times
...	
StndalnCh0RepeatCount[14]		1	0x00–0x7F (Sentence Playback) 0x00–0xFF (Tone Pattern Playback)	times
StndalnCh1RepeatCount[0]	Playback count for each sentence number / tone pattern number assigned to the #CH1_PLAY[3:0] input pins	1	0x00–0x7F (Sentence Playback) 0x00–0xFF (Tone Pattern Playback)	times
StndalnCh1RepeatCount[1]		1	0x00–0x7F (Sentence Playback) 0x00–0xFF (Tone Pattern Playback)	times
StndalnCh1RepeatCount[2]		1	0x00–0x7F (Sentence Playback) 0x00–0xFF (Tone Pattern Playback)	times
...	
StndalnCh1RepeatCount[14]		1	0x00–0x7F (Sentence Playback) 0x00–0xFF (Tone Pattern Playback)	times

Object manuals	Document codes	Items	Pages
S1V3F351 / S1V3F352 Technical Manual	414466900	9.2.3 Sound Playback Configuration Parameters	94

(Error)

Table 9.19 Playback Count Specification

StdInChxRepeatCount	Playback count
0xFF	Endless playback
0xFE	254 times
0x7E	253 times
...	...
0x03	3 times
0x02	2 times
0x01, 0x00	1 time (No repetition)

(Correct)

Table 9.19 Playback Count Specification

StdInChxRepeatCount	Playback count	
	Sentence Playback	Tone Pattern Playback
0xFF	Setting prohibited	Endless playback
0xFE		254 times
0x7E0xFD		253 times
...		...
0x80		128 times
0x7F	127 times	
0x7E	126 times	
...	...	
0x03	3 times	
0x02	2 times	
0x01, 0x00	1 time (No repetition)	

S1V3F Manual errata

ITEM: Limitations when using Playback Pitch Conversion																					
Object manuals	Document codes	Items	Pages																		
S1V3F351 / S1V3F352 Technical Manual	414466900	1.1 Features	1																		
<p>(Error)</p> <p style="text-align: center;">Table 1.1 Features</p> <table border="1" style="width: 100%; border-collapse: collapse; background-color: #f2f2f2;"> <thead> <tr> <th colspan="2" style="text-align: left; padding: 5px;">Sound Processing Functions</th> </tr> </thead> <tbody> <tr> <td style="padding: 5px;">Sound mixing</td> <td style="padding: 5px;">2-channel mixing playback (e.g., Ch.0: Voice, Ch.1: BGM)</td> </tr> <tr> <td style="padding: 5px;">Playback speed conversion function</td> <td style="padding: 5px;">75% to 125% (5% steps), supported only in Ch.0</td> </tr> <tr> <td style="padding: 5px;">Playback pitch conversion function</td> <td style="padding: 5px;">75% to 125% (5% steps), supported only in Ch.0</td> </tr> <tr> <td style="padding: 5px;">Tone generation function</td> <td style="padding: 5px;">Patterned tone output with a combination of a maximum of four tone frequencies</td> </tr> <tr> <td style="padding: 5px;">Sound data protection</td> <td style="padding: 5px;">Available</td> </tr> <tr> <td style="padding: 5px;">Repeat playback</td> <td style="padding: 5px;">1 to 254 times or endless</td> </tr> <tr> <td style="padding: 5px;">Volume setting</td> <td style="padding: 5px;">0 dB to -63 dB (0.5 dB steps) or silence</td> </tr> <tr> <td style="padding: 5px;">Sound recording function</td> <td style="padding: 5px;">Usable when an external QSPI flash memory is connected</td> </tr> </tbody> </table>				Sound Processing Functions		Sound mixing	2-channel mixing playback (e.g., Ch.0: Voice, Ch.1: BGM)	Playback speed conversion function	75% to 125% (5% steps), supported only in Ch.0	Playback pitch conversion function	75% to 125% (5% steps), supported only in Ch.0	Tone generation function	Patterned tone output with a combination of a maximum of four tone frequencies	Sound data protection	Available	Repeat playback	1 to 254 times or endless	Volume setting	0 dB to -63 dB (0.5 dB steps) or silence	Sound recording function	Usable when an external QSPI flash memory is connected
Sound Processing Functions																					
Sound mixing	2-channel mixing playback (e.g., Ch.0: Voice, Ch.1: BGM)																				
Playback speed conversion function	75% to 125% (5% steps), supported only in Ch.0																				
Playback pitch conversion function	75% to 125% (5% steps), supported only in Ch.0																				
Tone generation function	Patterned tone output with a combination of a maximum of four tone frequencies																				
Sound data protection	Available																				
Repeat playback	1 to 254 times or endless																				
Volume setting	0 dB to -63 dB (0.5 dB steps) or silence																				
Sound recording function	Usable when an external QSPI flash memory is connected																				
<p>(Correct)</p> <p style="text-align: center;">Table 1.1 Features</p> <table border="1" style="width: 100%; border-collapse: collapse; background-color: #f2f2f2;"> <thead> <tr> <th colspan="2" style="text-align: left; padding: 5px;">Sound Processing Functions</th> </tr> </thead> <tbody> <tr> <td style="padding: 5px;">Sound mixing</td> <td style="padding: 5px;">2-channel mixing playback (e.g., Ch.0: Voice, Ch.1: BGM)</td> </tr> <tr> <td style="padding: 5px;">Playback speed conversion function</td> <td style="padding: 5px;">75% to 125% (5% steps), supported only in Ch.0</td> </tr> <tr> <td style="padding: 5px;">Playback pitch conversion function</td> <td style="padding: 5px;">75% to 125% (5% steps), 90% to 110% (5% steps), supported only in Ch.0 <u>Not available with mixing.</u></td> </tr> <tr> <td style="padding: 5px;">Tone generation function</td> <td style="padding: 5px;">Patterned tone output with a combination of a maximum of four tone frequencies</td> </tr> <tr> <td style="padding: 5px;">Sound data protection</td> <td style="padding: 5px;">Available</td> </tr> <tr> <td style="padding: 5px;">Repeat playback</td> <td style="padding: 5px;">1 to 254 times or endless</td> </tr> <tr> <td style="padding: 5px;">Volume setting</td> <td style="padding: 5px;">0 dB to -63 dB (0.5 dB steps) or silence</td> </tr> <tr> <td style="padding: 5px;">Sound recording function</td> <td style="padding: 5px;">Usable when an external QSPI flash memory is connected</td> </tr> </tbody> </table>				Sound Processing Functions		Sound mixing	2-channel mixing playback (e.g., Ch.0: Voice, Ch.1: BGM)	Playback speed conversion function	75% to 125% (5% steps), supported only in Ch.0	Playback pitch conversion function	75% to 125% (5% steps), 90% to 110% (5% steps), supported only in Ch.0 <u>Not available with mixing.</u>	Tone generation function	Patterned tone output with a combination of a maximum of four tone frequencies	Sound data protection	Available	Repeat playback	1 to 254 times or endless	Volume setting	0 dB to -63 dB (0.5 dB steps) or silence	Sound recording function	Usable when an external QSPI flash memory is connected
Sound Processing Functions																					
Sound mixing	2-channel mixing playback (e.g., Ch.0: Voice, Ch.1: BGM)																				
Playback speed conversion function	75% to 125% (5% steps), supported only in Ch.0																				
Playback pitch conversion function	75% to 125% (5% steps), 90% to 110% (5% steps), supported only in Ch.0 <u>Not available with mixing.</u>																				
Tone generation function	Patterned tone output with a combination of a maximum of four tone frequencies																				
Sound data protection	Available																				
Repeat playback	1 to 254 times or endless																				
Volume setting	0 dB to -63 dB (0.5 dB steps) or silence																				
Sound recording function	Usable when an external QSPI flash memory is connected																				

Object manuals	Document codes	Items	Pages
S1V3F351 / S1V3F352 Technical Manual	414466900	7.1.1 Overview	20
<p>(Error)</p> <ul style="list-style-type: none">• Playback pitch conversion (S1V3F351 CH.0 only) *1<ul style="list-style-type: none">- When using only the playback pitch conversion Playback pitch is configurable from 75% (low) to 125% (high) in 5% steps based on the standard pitch of 100%.- When using with the playback speed conversion Playback pitch is configurable from 90% (low) to 110% (high) in 5% steps based on the standard pitch of 100%.			
<p>(Correct)</p> <ul style="list-style-type: none">• Playback pitch conversion (S1V3F351 CH.0 only, not available with mixing.) *1<ul style="list-style-type: none">- When using only the playback pitch conversion Playback pitch is configurable from 75% (low) to 125% (high) in 5% steps based on the standard pitch of 100%.- When using with the playback speed conversion Playback pitch is configurable from 90% (low) to 110% (high) in 5% steps based on the standard pitch of 100%.			

Object manuals	Document codes	Items	Pages
S1V3F351 / S1V3F352 Technical Manual	414466900	8.5.3 Sound Playback Control Procedure	52,53

(Error)

Setting Sound Playback Speed / Pitch

(1) Setting Playback Speed (Effective only in Ch. 0)

Set the playback speed by sending the ISC_SPEED_CONFIG_REQ message.

1. Check if this IC is in Idle state (refer to *Section 8.5.1*).
2. Send the ISC_SPEED_CONFIG_REQ message.
Speed_CH0: Playback speed

Set Speed_CH0 to 0x00 when the playback speed conversion function is not used.

~~~~~  
(2) Setting Playback Pitch (Effective only in S1V3F351 Ch.0)

Set the playback pitch by sending the ISC\_PITCH\_CONFIG\_REQ message.

1. Check if this IC is in Idle state (refer to *Section 8.5.1*).
2. Send the ISC\_PITCH\_CONFIG\_REQ message.  
Pitch\_CH0: Playback pitch

Set Pitch\_CH0 to 0x00 when the playback pitch conversion function is not used.

(Correct)

**Setting Sound Playback Speed / Pitch**

(1) Setting Playback Speed (Effective only in Ch. 0)

Set the playback speed by sending the ISC\_SPEED\_CONFIG\_REQ message.

1. Check if this IC is in Idle state (refer to *Section 8.5.1*).
2. Send the ISC\_SPEED\_CONFIG\_REQ message.  
Speed\_CH0: Playback speed

Set Speed\_CH0 to ~~0x64~~ ~~0x00~~ when the playback speed conversion function is not used.

~~~~~  
(2) Setting Playback Pitch (Effective only in S1V3F351 Ch.0, not available with mixing.)

Set the playback pitch by sending the ISC_PITCH_CONFIG_REQ message.

1. Check if this IC is in Idle state (refer to *Section 8.5.1*).
2. Send the ISC_PITCH_CONFIG_REQ message.
Pitch_CH0: Playback pitch

Set Pitch_CH0 to 0x00 when the playback pitch conversion function is not used, or when the mixing function is used.

Object manuals	Document codes	Items	Pages
S1V3F351 / S1V3F352 Technical Manual	414466900	8.5.3 Sound Playback Control Procedure	53

(Error)

Table 8.14 Playback Pitch Settings (when the playback speed conversion function is disabled*)

Pitch_CH0[7:0]	Pitch	
0x7D	125%	High ↑ ← Standard pitch ↓ Low
0x78	120%	
0x73	115%	
0x6E	110%	
0x69	105%	
0x64	100%	
0x5F	95%	
0x5A	90%	
0x55	85%	
0x50	80%	
0x4B	75%	
0x00	Playback pitch conversion disabled	
Other	Setting prohibited	

* Speed_CH0 of the ISC_SPEED_CONFIG_REQ message = 0x00

When using this function with the playback speed conversion function, the setting range is limited as shown in the table below.

(Correct)

Table 8.14—Playback Pitch Settings (when the playback speed conversion function is disabled*)

Pitch_CH0[7:0]	Pitch	
0x7D	125%	High ↑ ← Standard pitch ↓ Low
0x78	120%	
0x73	115%	
0x6E	110%	
0x69	105%	
0x64	100%	
0x5F	95%	
0x5A	90%	
0x55	85%	
0x50	80%	
0x4B	75%	
0x00	Playback pitch conversion disabled	
Other	Setting prohibited	

* Speed_CH0 of the ISC_SPEED_CONFIG_REQ message = 0x00

When using this function with the playback speed conversion function, the setting range is limited as shown in the table below.

Object manuals	Document codes	Items	Pages
S1V3F351 / S1V3F352 Technical Manual	414466900	8.5.3 Sound Playback Control Procedure	53

(Error)

Table 8.15 Playback Pitch Settings (when the playback speed conversion function is enabled*)

Pitch_CH0[7:0]	Pitch	
0x6E	110%	High
0x69	105%	↑
0x64	100%	← Standard pitch
0x5F	95%	↓
0x5A	90%	Low
0x00	Playback pitch conversion disabled	
Other	Setting prohibited	

* $0x55 \leq \text{Speed_CH0}$ of the `ISC_SPEED_CONFIG_REQ` message $\leq 0x73$

(Correct)

Table 8.15 Playback Pitch Settings (~~when the playback speed conversion function is enabled*~~)

Pitch_CH0[7:0]	Pitch	
0x6E	110%	High
0x69	105%	↑
0x64	100%	← Standard pitch
0x5F	95%	↓
0x5A	90%	Low
0x00	Playback pitch conversion disabled	
Other	Setting prohibited	

~~* $0x55 \leq \text{Speed_CH0}$ of the `ISC_SPEED_CONFIG_REQ` message $\leq 0x73$~~

Object manuals	Document codes	Items	Pages
S1V3F351 / S1V3F352 Technical Manual	414466900	8.7 Sound Recording Function	62
<p>(Error)</p> <p>Playing Recorded Sound Data</p> <ol style="list-style-type: none"> 1. Check if this IC is in Idle state (refer to <i>Section 8.5.1</i>). ~~~~~ 6. Send the ISC_SPEED_CONFIG_REQ message as necessary. Speed_CH0: Playback speed When not using the playback speed conversion function, set Speed_CH0 to 0x00. 7. Send the ISC_PITCH_CONFIG_REQ message as necessary. (S1V3F351 only) Pitch_CH0: Playback pitch When not using the pitch conversion function, set Pitch_CH0 to 0x00. 			
<p>(Correct)</p> <p>Playing Recorded Sound Data</p> <ol style="list-style-type: none"> 1. Check if this IC is in Idle state (refer to <i>Section 8.5.1</i>). ~~~~~ 6. Send the ISC_SPEED_CONFIG_REQ message as necessary. Speed_CH0: Playback speed When not using the playback speed conversion function, set Speed_CH0 to <u>0x64 0x00</u>. 7. Send the ISC_PITCH_CONFIG_REQ message as necessary. (S1V3F351 only, <u>not available with mixing</u>) Pitch_CH0: Playback pitch When not using the pitch conversion function, <u>or when using the mixing function</u>, set Pitch_CH0 to 0x00. 			

Object manuals	Document codes	Items	Pages
S1V3F351 / S1V3F352 Technical Manual	414466900	8.11.2 REQ Messages	72

(Error)

ISC_PITCH_CONFIG_REQ

Direction	Byte No.	Field	Value	Description
Host → S1V	0	Msg_ID	0x08	ISC_PITCH_CONFIG_REQ Specifies the playback pitch of Ch.0. (*1)
	1	Pitch_CH0	<pitch>	CH0 Playback pitch 0x7D: 125% (*2) 0x78: 120% (*2) 0x73: 115% (*2) 0x6E: 110% 0x69: 105% 0x64: 100% 0x5F: 95% 0x5A: 90% 0x55: 85% (*2) 0x50: 80% (*2) 0x4B: 75% (*2) 0x00: Playback pitch conversion disabled Other: Setting prohibited
	2	CRC	<CRC>	CRC value
S1V → Host	0	Receive_Status	<status>	Response byte to indicate receiving status

*1: The playback pitch can be changed only in the S1V3F351 Ch.0 and when playback is stopped. This message cannot be used in the S1V3F352.

*2: These settings can be specified only when Speed_Ch0 is set to 0x00 using the ISC_SPEED_CONFIG_REQ message. (See Table 8.16.)

(Correct)

ISC_PITCH_CONFIG_REQ

Direction	Byte No.	Field	Value	Description
Host → S1V	0	Msg_ID	0x08	ISC_PITCH_CONFIG_REQ Specifies the playback pitch of Ch.0. (*1,*2)
	1	Pitch_CH0	<pitch>	CH0 Playback pitch 0x7D: 125% (*2) 0x78: 120% (*2) 0x73: 115% (*2) 0x6E: 110% 0x69: 105% 0x64: 100% 0x5F: 95% 0x5A: 90% 0x55: 85% (*2) 0x50: 80% (*2) 0x4B: 75% (*2) 0x00: Playback pitch conversion disabled Other: Setting prohibited
	2	CRC	<CRC>	CRC value
S1V → Host	0	Receive_Status	<status>	Response byte to indicate receiving status

*1: The playback pitch can be changed only in the S1V3F351 Ch.0 and when playback is stopped. This message cannot be used in the S1V3F352.

*2: ~~These settings can be specified only when Speed_Ch0 is set to 0x00 using the ISC_SPEED_CONFIG_REQ message. (See Table 8.16.)~~

*2: Pitch conversion is not available with mixing.

Object manuals	Document codes	Items	Pages
S1V3F351 / S1V3F352 Technical Manual	414466900	9.2.1 List of Parameters	86,87

(Error)

Table 9.1 List of Parameters

Byte location	Parameter name	Byte length	Description	Configurable value / range	Remarks
0	Keycode ^(*)	4	Keycode value	0–0xFFFFFFFF	–
4	ManufacturerId	4	Manufacturer ID used for checking if the parameter information exists	0x30525345	A tag to identify the presence of the parameter information
...
112	StndalnSoundSpeedLevelList	7	Speed setting value for each playback speed level	0x4B–0x7D 0x55–0x73 when using with playback pitch conversion	x7 params
119	StndalnSoundPitchLevelList	5	Pitch setting value for each playback pitch level	0x4B–0x7D 0x5A–0x6E when using with playback speed conversion	x5 params

(Correct)

Table 9.1 List of Parameters

Byte location	Parameter name	Byte length	Description	Configurable value / range	Remarks
0	Keycode ^(*)	4	Keycode value	0–0xFFFFFFFF	–
4	ManufacturerId	4	Manufacturer ID used for checking if the parameter information exists	0x30525345	A tag to identify the presence of the parameter information
...
112	StndalnSoundSpeedLevelList	7	Speed setting value for each playback speed level	0x4B–0x7D 0x55–0x73 when using with playback pitch conversion	x7 params
119	StndalnSoundPitchLevelList	5	Pitch setting value for each playback pitch level	0x4B–0x7D 0x5A–0x6E when using with playback speed conversion	x5 params

Object manuals	Document codes	Items	Pages
S1V3F351 / S1V3F352 Technical Manual	414466900	9.2.3 Sound Playback Configuration Parameters	92
<p>(Error)</p> <p>Configuration example</p> <ul style="list-style-type: none"> When converting the playback speed only <ul style="list-style-type: none"> Number of levels: <code>StndalnSoundSpeedSteps = 7</code> Speed value for each level: <ul style="list-style-type: none"> <code>StndalnSoundSpeedLevelList[0] = 0x4B (75%)</code> <code>StndalnSoundSpeedLevelList[1] = 0x55 (85%)</code> <code>StndalnSoundSpeedLevelList[2] = 0x5F (95%)</code> <code>StndalnSoundSpeedLevelList[3] = 0x64 (100%)</code> <code>StndalnSoundSpeedLevelList[4] = 0x69 (105%)</code> <code>StndalnSoundSpeedLevelList[5] = 0x73 (115%)</code> <code>StndalnSoundSpeedLevelList[6] = 0x7D (125%)</code> Initial speed at start-up: <code>StndalnDefaultVolumeLevel = 3 (100%)</code> When conversing the playback speed and pitch simultaneously (S1V3F351) <ul style="list-style-type: none"> Number of levels: <code>StndalnSoundSpeedSteps = 7</code> Speed value for each level: <ul style="list-style-type: none"> <code>StndalnSoundSpeedLevelList[0] = 0x55 (85%)</code> <code>StndalnSoundSpeedLevelList[1] = 0x5A (90%)</code> <code>StndalnSoundSpeedLevelList[2] = 0x5F (95%)</code> <code>StndalnSoundSpeedLevelList[3] = 0x64 (100%)</code> <code>StndalnSoundSpeedLevelList[4] = 0x69 (105%)</code> <code>StndalnSoundSpeedLevelList[5] = 0x6E (110%)</code> <code>StndalnSoundSpeedLevelList[6] = 0x73 (115%)</code> Initial speed at start-up: <code>StndalnDefaultVolumeLevel = 3 (100%)</code> 			
<p>(Correct)</p> <p>Configuration example</p> <ul style="list-style-type: none"> When converting the playback speed only <ul style="list-style-type: none"> Number of levels: <code>StndalnSoundSpeedSteps = 7</code> Speed value for each level: <ul style="list-style-type: none"> <code>StndalnSoundSpeedLevelList[0] = 0x4B (75%)</code> <code>StndalnSoundSpeedLevelList[1] = 0x55 (85%)</code> <code>StndalnSoundSpeedLevelList[2] = 0x5F (95%)</code> <code>StndalnSoundSpeedLevelList[3] = 0x64 (100%)</code> <code>StndalnSoundSpeedLevelList[4] = 0x69 (105%)</code> <code>StndalnSoundSpeedLevelList[5] = 0x73 (115%)</code> <code>StndalnSoundSpeedLevelList[6] = 0x7D (125%)</code> Initial speed at start-up: <code>StndalnDefaultSpeedLevel</code> <code>StndalnDefaultVolumeLevel</code> = 3 (100%) When conversing the playback speed and pitch simultaneously (S1V3F351) <ul style="list-style-type: none"> Number of levels: <code>StndalnSoundSpeedSteps = 7</code> Speed value for each level: <ul style="list-style-type: none"> <code>StndalnSoundSpeedLevelList[0] = 0x55 (85%)</code> <code>StndalnSoundSpeedLevelList[1] = 0x5A (90%)</code> <code>StndalnSoundSpeedLevelList[2] = 0x5F (95%)</code> <code>StndalnSoundSpeedLevelList[3] = 0x64 (100%)</code> 			

StdalnSoundSpeedLevelList[4] = 0x69 (105%)
StdalnSoundSpeedLevelList[5] = 0x6E (110%)
StdalnSoundSpeedLevelList[6] = 0x73 (115%)

Initial speed at start-up: ~~StdalnDefaultSpeedLevel StdalnDefaultVolumeLevel~~ = 3 (100%)

Object manuals	Document codes	Items	Pages
S1V3F351 / S1V3F352 Technical Manual	414466900	9.2.3 Sound Playback Configuration Parameters	93

(Error)

Table 9.15 Playback Pitch Configuration Parameters

Parameter name	Description	Byte length	Settable value	Unit
StndalnSoundPitchSteps	Number of selectable pitch levels	1	1–5	level
StndalnSoundPitchLevelList[0]	Pitch setting value for each level	1	0x4B–0x7D *1	%
StndalnSoundPitchLevelList[1]		1	0x4B–0x7D *1	%
StndalnSoundPitchLevelList[2]		1	0x4B–0x7D *1	%
...	
StndalnSoundPitchLevelList[4]		1	0x4B–0x7D *1	%
StndalnDefaultPitchLevel	Initial pitch level after the IC starts up	1	0–4	level

*1: 0x5A–0x6E when the playback speed conversion function is simultaneously used

The S1V3F351 Ch.0 allows setting of playback pitch to 11 levels (or 5 levels when the playback speed conversion function is simultaneously used). In Standalone mode, up to 5 pitch levels, which are configured using these parameters, can be switched using the input pins.

The StndalnSoundPitchSteps parameter configures the number of pitch levels to be used and the StndalnSoundPitchLevelList parameter assigns a pitch setting value to each level.

The StndalnSoundPitchLevelList parameter is effective from Element 0 to the element of which number is (StndalnSoundPitchSteps - 1) and the settings exceeding this range are ignored.

The StndalnDefaultPitchLevel parameter determines the default pitch level that is initially set when this IC starts up. It should be specified by the element number of StndalnSoundPitchLevelList.

(Correct)

Table 9.15 Playback Pitch Configuration Parameters

Parameter name	Description	Byte length	Settable value	Unit
StndalnSoundPitchSteps	Number of selectable pitch levels	1	1–5	level
StndalnSoundPitchLevelList[0]	Pitch setting value for each level	1	0x4B–0x7D *1 <u>0x5A–0x6E</u> *1	%
StndalnSoundPitchLevelList[1]		1	0x4B–0x7D *1 <u>0x5A–0x6E</u> *1	%
StndalnSoundPitchLevelList[2]		1	0x4B–0x7D *1 <u>0x5A–0x6E</u> *1	%
...	
StndalnSoundPitchLevelList[4]		1	0x4B–0x7D *1 <u>0x5A–0x6E</u> *1	%
StndalnDefaultPitchLevel	Initial pitch level after the IC starts up	1	0–4	level

*1: ~~0x5A–0x6E~~ when the playback speed conversion function is simultaneously used

*1: If the mixing function is used, set 0x00

The S1V3F351 Ch.0 allows setting of playback pitch to 5 levels ~~11 levels (or 5 levels when the playback speed conversion function is simultaneously used)~~. In Standalone mode, up to 5 pitch levels, which are configured using these parameters, can be switched using the input pins.

The StndalnSoundPitchSteps parameter configures the number of pitch levels to be used and the StndalnSoundPitchLevelList parameter assigns a pitch setting value to each level.

The StndalnSoundPitchLevelList parameter is effective from Element 0 to the element of which number is (StndalnSoundPitchSteps - 1) and the settings exceeding this range are ignored.

The StndalnDefaultPitchLevel parameter determines the default pitch level that is initially set when this IC starts up. It should be specified by the element number of StndalnSoundPitchLevelList.

Since the playback pitch conversion function and the mixing function cannot be used simultaneously, the pitch setting value should be set to 0x00 when using the mixing function.

Object manuals	Document codes	Items	Pages
S1V3F351 / S1V3F352 Technical Manual	414466900	9.2.3 Sound Playback Configuration Parameters	93

(Error)

Table 9.16 Playback Pitch Settings (when the speech speed conversion function is disabled*)

StndalnSoundPitchLevelList	Pitch	
0x7D	125%	High ↑ ← Standard pitch ↓ Low
0x78	120%	
0x73	115%	
0x6E	110%	
0x69	105%	
0x64	100%	
0x5F	95%	
0x5A	90%	
0x55	85%	
0x50	80%	
0x4B	75%	
0x00	Playback pitch conversion disabled	
Other	Setting prohibited	

* When the StndalnSoundSpeedLevelList bytes are all 0x00

(Correct)

~~**Table 9.16 Playback Pitch Settings (when the speech speed conversion function is disabled*)**~~

StndalnSoundPitchLevelList	Pitch	
0x7D	125%	High ↑ ← Standard pitch ↓ Low
0x78	120%	
0x73	115%	
0x6E	110%	
0x69	105%	
0x64	100%	
0x5F	95%	
0x5A	90%	
0x55	85%	
0x50	80%	
0x4B	75%	
0x00	Playback pitch conversion disabled	
Other	Setting prohibited	

~~* When the StndalnSoundSpeedLevelList bytes are all 0x00~~

Object manuals	Document codes	Items	Pages
S1V3F351 / S1V3F352 Technical Manual	414466900	9.2.3 Sound Playback Configuration Parameters	93

(Error)

Table 9.17 Playback Pitch Settings
(when the speech speed conversion function is enabled*)

StndalnSoundPitchLevelList	Pitch	
0x6E	110%	High
0x69	105%	↑
0x64	100%	← Standard pitch
0x5F	95%	↓
0x5A	90%	Low
0x00	Playback pitch conversion disabled	
Other	Setting prohibited	

* 0x55 ≤ StndalnSoundSpeedLevelList ≤ 0x73

(Correct)

Table 9.17 Playback Pitch Settings
(when the speech speed conversion function is enabled*)

StndalnSoundPitchLevelList	Pitch	
0x6E	110%	High
0x69	105%	↑
0x64	100%	← Standard pitch
0x5F	95%	↓
0x5A	90%	Low
0x00	Playback pitch conversion disabled	
Other	Setting prohibited	

* ~~0x55 ≤ StndalnSoundSpeedLevelList ≤ 0x73~~

* Pitch conversion is not available with mixing.

Object manuals	Document codes	Items	Pages
S1V3F351 / S1V3F352 Technical Manual	414466900	9.2.3 Sound Playback Configuration Parameters	94
<p>(Error)</p> <p>Configuration example</p> <ul style="list-style-type: none"> • When converting the playback pitch only <ul style="list-style-type: none"> Number of levels: StndalnSoundPitchSteps = 5 Pitch value for each level: StndalnSoundPitchLevelList[0] = 0x55 (85%) StndalnSoundPitchLevelList[1] = 0x5F (95%) StndalnSoundPitchLevelList[2] = 0x64 (100%) StndalnSoundPitchLevelList[3] = 0x73 (115%) StndalnSoundPitchLevelList[4] = 0x7D (125%) Initial pitch at start-up: StndalnDefaultVolumeLevel = 2 (100%) • When conversing the playback speed and pitch simultaneously <ul style="list-style-type: none"> Number of levels: StndalnSoundPitchSteps = 5 Pitch value for each level: StndalnSoundPitchLevelList[0] = 0x5A (90%) StndalnSoundPitchLevelList[1] = 0x5F (95%) StndalnSoundPitchLevelList[2] = 0x64 (100%) StndalnSoundPitchLevelList[3] = 0x69 (105%) StndalnSoundPitchLevelList[4] = 0x6E (110%) Initial pitch at start-up: StndalnDefaultVolumeLevel = 2 (100%) 			
<p>(Correct)</p> <p>Configuration example</p> <ul style="list-style-type: none"> • When converting the playback pitch only <ul style="list-style-type: none"> Number of levels: StndalnSoundPitchSteps = 5 Pitch value for each level: StndalnSoundPitchLevelList[0] = 0x55 (85%) StndalnSoundPitchLevelList[1] = 0x5F (95%) StndalnSoundPitchLevelList[2] = 0x64 (100%) StndalnSoundPitchLevelList[3] = 0x73 (115%) StndalnSoundPitchLevelList[4] = 0x7D (125%) Initial pitch at start-up: StndalnDefaultVolumeLevel = 2 (100%) • When conversing the playback speed and pitch simultaneously <ul style="list-style-type: none"> Number of levels: StndalnSoundPitchSteps = 5 Pitch value for each level: StndalnSoundPitchLevelList[0] = 0x5A (90%) StndalnSoundPitchLevelList[1] = 0x5F (95%) StndalnSoundPitchLevelList[2] = 0x64 (100%) StndalnSoundPitchLevelList[3] = 0x69 (105%) StndalnSoundPitchLevelList[4] = 0x6E (110%) Initial pitch at start-up: StndalnDefaultPitchLevel StndalnDefaultVolumeLevel = 2 (100%) 			