

S1C31D50 Application Note

**S1C31D50**  
**Boot Loader**  
**Manual**

## Evaluation board/kit and Development tool important notice

---

1. This evaluation board/kit or development tool is designed for use for engineering evaluation, demonstration, or development purposes only. Do not use it for other purposes. It is not intended to meet the requirements of design for finished products.
2. This evaluation board/kit or development tool is intended for use by an electronics engineer and is not a consumer product. The user should use it properly and in a safe manner. Seiko Epson does not assume any responsibility or liability of any kind of damage and/or fire caused by the use of it. The user should cease to use it when any abnormal issue occurs even during proper and safe use.
3. The part used for this evaluation board/kit or development tool may be changed without any notice.

## NOTICE

---

No part of this material may be reproduced or duplicated in any form or by any means without the written permission of Seiko Epson. Seiko Epson reserves the right to make changes to this material without notice. Seiko Epson does not assume any liability of any kind arising out of any inaccuracies contained in this material or due to its application or use in any product or circuit and, further, there is no representation that this material is applicable to products requiring high level reliability, such as, medical products. Moreover, no license to any intellectual property rights is granted by implication or otherwise, and there is no representation or warranty that anything made in accordance with this material will be free from any patent or copyright infringement of a third party. When exporting the products or technology described in this material, you should comply with the applicable export control laws and regulations and follow the procedures required by such laws and regulations. You are requested not to use, to resell, to export and/or to otherwise dispose of the products (and any technical information furnished, if any) for the development and/or manufacture of weapon of mass destruction or for other military purposes.

All brands or product names mentioned herein are trademarks and/or registered trademarks of their respective companies.

# Table of Contents

<b>1. Overview .....</b>	<b>1</b>
<b>1.1. Loadable Data Format .....</b>	<b>1</b>
<b>1.2. S1C31D50 Pin Setting and Serial Communication Format .....</b>	<b>1</b>
<b>2. Function .....</b>	<b>2</b>
<b>2.1 Boot Loader .....</b>	<b>2</b>
<b>2.2 User Program.....</b>	<b>4</b>
<b>2.3 PC.....</b>	<b>4</b>
<b>3. Memory Usage.....</b>	<b>5</b>
<b>3.1 Update Indicator ([indicator] Area).....</b>	<b>5</b>
<b>3.2 Reserved RAM for Flash Programming Library ([fpl_ram] Area).....</b>	<b>6</b>
<b>Revision History .....</b>	<b>7</b>

## 1. Overview

This document describes the boot loader sample software included in the S1C31D50 sample software package. This sample software contains an example of a boot loader that calls the flash programming library (seFlashLibrary) and a sample program that is loadable by the boot loader.

The folder configuration of this boot loader sample software is as follows:

- Examples/BootLoader/Bootloader           The boot loader
- Examples/BootLoader/Loadsample        The loadable program

\* For details on how to use the sample software, refer to "S1C31D50 Peripheral Circuit Sample Software Manual".

### 1.1. Loadable Data Format

The loadable data format is the Motorola S-record. It is necessary that the end of the downloaded data is either the S7/S8/S9 records. As a result, the boot loader recognizes that download was completed.

### 1.2. S1C31D50 Pin Setting and Serial Communication Format

The boot loader uses UART Ch.0 to communicate with PC. UART Ch.0 functions are using following pins:

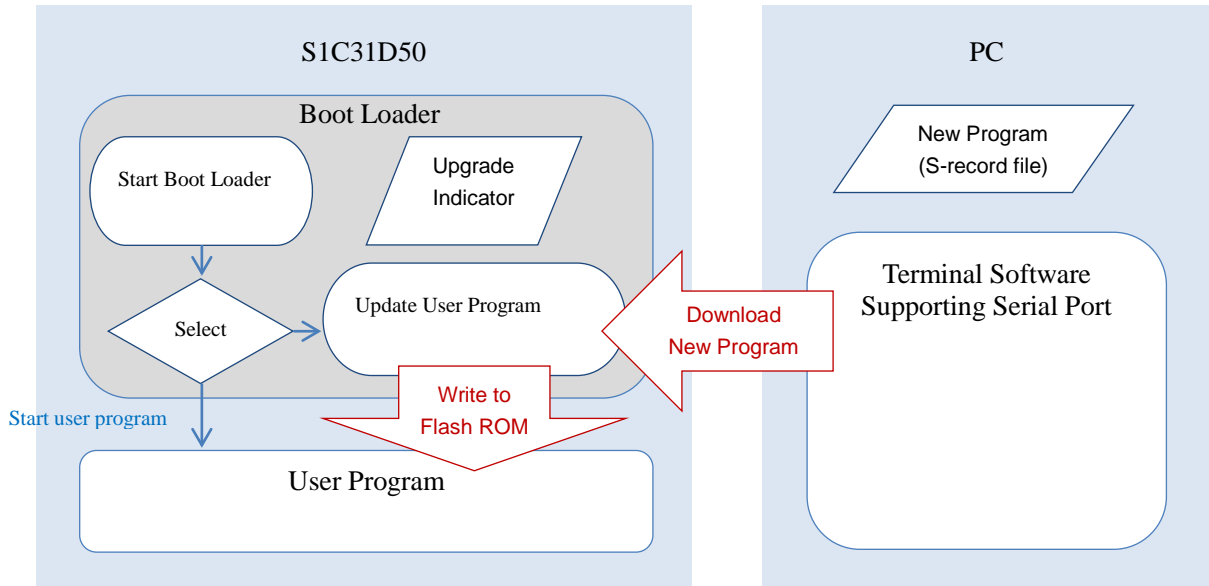
<b>Pin name</b>	<b>Description</b>
P12	UART/Ch.0/USIN
P13	UART/Ch.0/USOUT

UART Ch.0 has been initialized with below format:

Boaudrate	230400 bps
Data length	8 bits
Parity	None
Stop bit	1 bit
Flow control	Software (XON/XOFF)

## 2. Function

### 2. Function



#### 2.1 Boot Loader

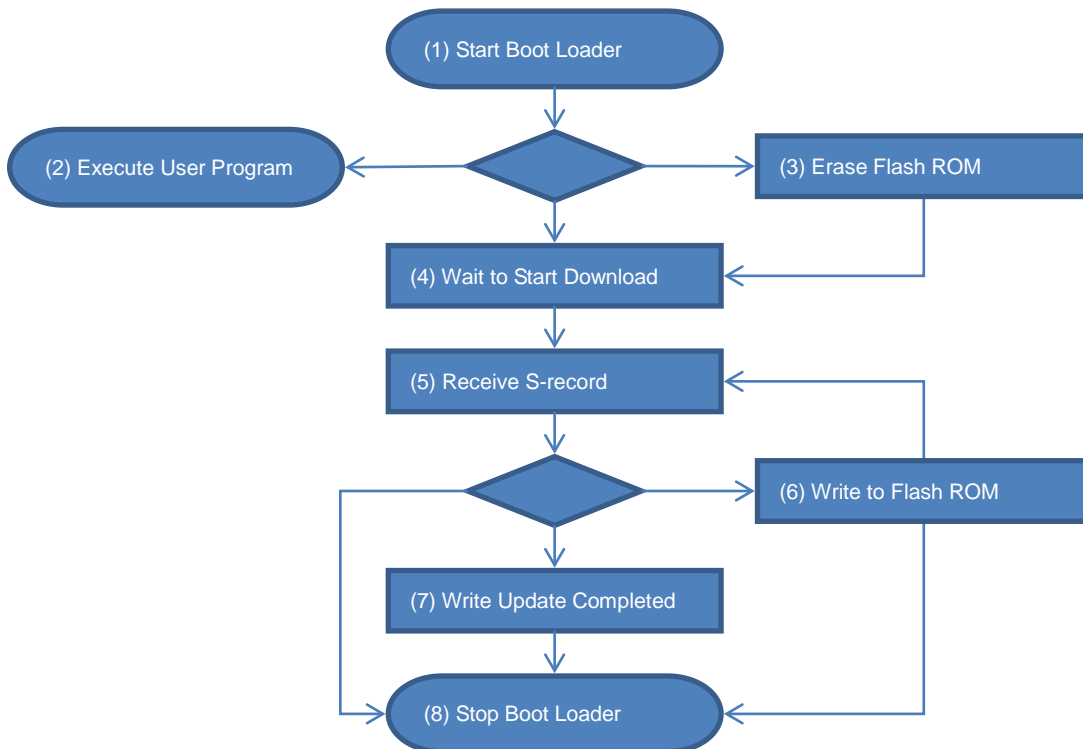
The boot loader exists in the flash ROM area from 0x0000 to 0x3FFF (16KB).

When S1C31D50 is reset, the boot loader begins operating and selects either of two functions, starting or updating the user program.

If the program update is completed, the boot loader starts the user program that exists in 0x4000 or later area.

If the update is in progress, the boot loader receives the new program by using UART, and writes it into 0x4000 or later area. Since the boot loader stops when the reception of the new program is ended, please reset S1C31D50.

The new program starts after reset because the update of the program is completed.



Please examine the following points when you implement the boot loader into your device:

- A) Display of the upgrade start.  
When the boot loader flows from (1) to (3) (4), it is necessary to display “upgrade start” to the user. The display should guide the user to connect UART cable with appropriate timing. Otherwise, UART error will be caused when beginning to communicate.
- B) Display of the upgrade end.  
When the boot loader flows from (7) to (8), it is necessary to display “upgrade end” to the user.
- C) How should the boot loader operate when the problem has been detected?
- i. Communication timeout.  
This boot loader (4) (5) monitors the UART reception or the time-out. But it retries (4) (5) again, even if the time-out occurs. The boot loader waits for time-out period (3ms) after transmitting XOFF. There is a possibility to shorten this time-out.
  - ii. Communication error.  
If the error is caused in UART communication, it is necessary to demand to send the record again. This boot loader (4) (5) does not monitor the UART error, because the terminal software working on PC does not accept such request.
  - iii. Wrong data.  
This boot loader confirms the checksum of the S-record (5), and stops without writing in case of the error (8). It is better to demand to send the record again.
  - iv. Writing failure in flash ROM.  
There is possibility to rewrite data at the already written address. The same value can be written again. The value can be rewritten from 1 to 0. But the rewriting from 0 to 1 causes an error. The downloaded data causes this failure. When this error is caused, it is necessary to erase flash ROM, and download from the beginning again.
- D) Does the boot loader work correctly even if it was reset?  
This boot loader does not erase flash ROM again from (1) to (4) when reset while updating. It will work correctly by erasing again, but it is necessary to rewrite everything.  
In case of the boot loader does not erase again, the following confirmation is necessary. These conditions cannot be judged only from the reception of the S-record. If these conditions are false, it is better to erase again.
- i. Is the data that has already been written correct?
  - ii. Is the data newly received the same program as the data that has already been received?
- E) When should the boot loader erase flash ROM?  
When the upgrade indicator is “do upgrade”, this boot loader (3) erases the user program and the upgrade indicator ([indicator] area). The value of the upgrade indicator becomes 0xFF, and means “now upgrading” by the erase. The boot loader never erases until the upgrade is completed after this.  
As a result, the boot loader never erases flash ROM at each reset. But the user program becomes impossible to upgrade when itself does not work because of wrong download and so on.  
It is better to provide additional condition that the boot loader erases flash ROM.
- F) How should the boot loader operate after the loading (7)?  
This boot loader activates the watchdog timer after flash programming (8) and resets the MCU. However, it is also possible to execute the new program at once.
- G) Loader application on PC  
It is possible to download new user program smoothly by preparing your loaded application on PC. Such application should have the following functions:
- i. Inspect whether the program file is correct.
  - ii. Pause an upgrade process.
  - iii. Restart an upgrade process.
  - iv. Resend a record.
  - v. Confirm the upgrade is completed.

## 2. Function

---

### 2.2 User Program

Please place the user program in 0x4000 or later.

When the user program decided to upgrade itself, the program should call the “start\_upgrade” function contained in the boot loader. The "start\_upgrade" function changes the indicator of the boot loader to "do\_upgrade", and returns to the user program (caller function). The user program can continue executing. Please reset S1C31D50 so that the update of the user program may actually begin.

Specification of the “start\_upgrade” function:

How to call the function	<p>The entry of this function is stored in the vector table for the boot loader (0x00BC-). The vector number is 47 (a reserved vector). Because this function is not an interrupt handler, call as a normal function.</p> <pre>static void start_upgrade( uint32_t app_link_location ){     void (*pfMainApp)( void );     uint32_t *pointer;     __disable_interrupt();     pointer = (uint32_t *)app_link_location;     pfMainApp = (void (*)(void))(*pointer);     pfMainApp(); }  // call "start_upgrade" function of the boot loader start_upgrade(0x00BC);</pre>
Required RAM	0x0015 0000 - 0x0015 07FF
Required stack area	112 bytes
Used peripherals	T16 Ch.1 is used to check timeout.

### 2.3 PC

Please download the new program by using terminal software that supports the serial port. For example, “TeraTerm” has been used to test the boot loader.

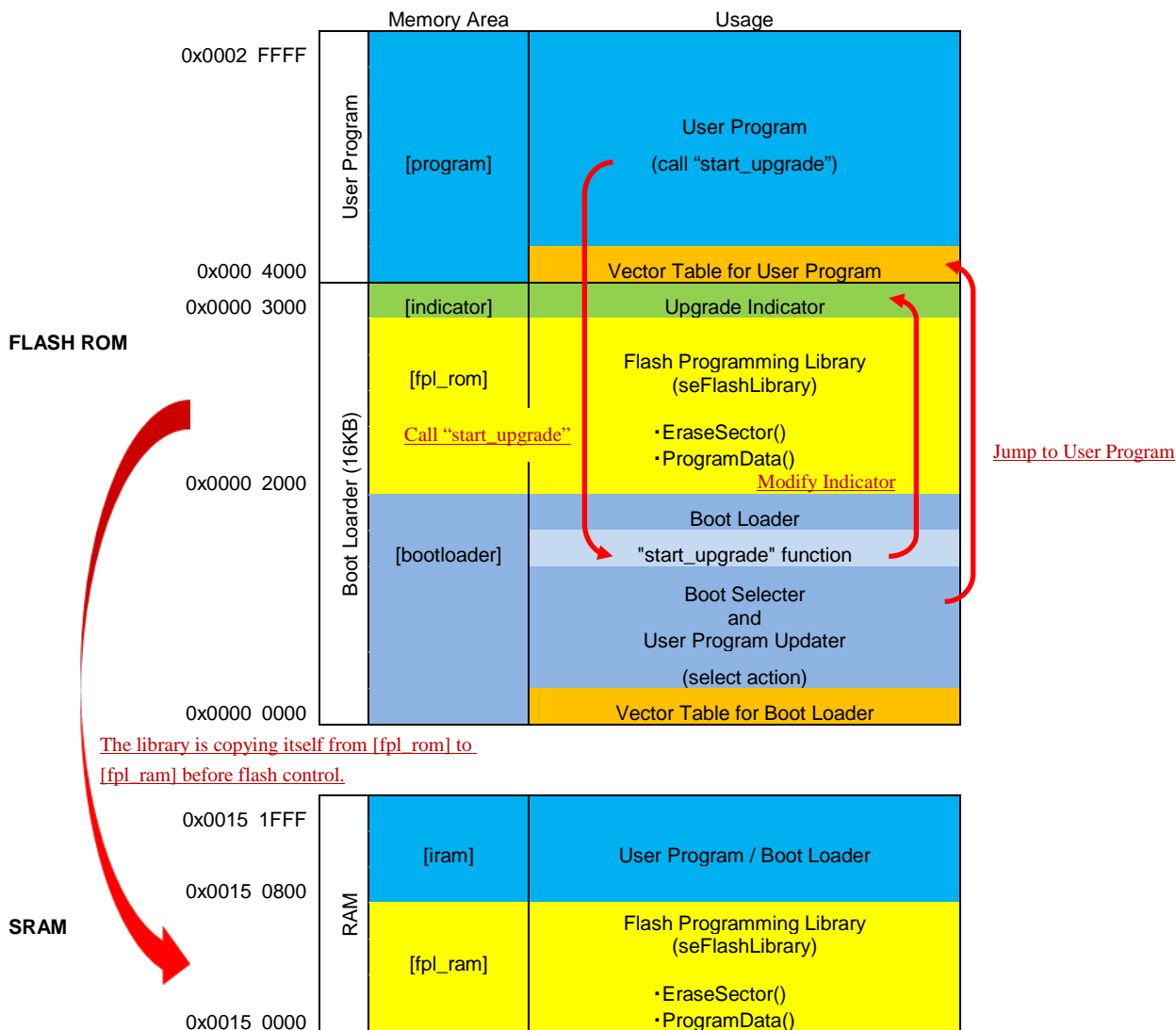
Tera Term : <http://tssh2.osdn.jp/index.html.en>

To download the new program (Motorola S-record), Please operate TeraTerm as follows:

- (1) Select [New connection] from [File] menu, and specify [Serial] and your [Port], then click the [OK] button.
- (2) Select [Serial Port...] from [Setup] menu. The [Serial port setup] dialog box is displayed.
- (3) Enter the following parameters:

Port:	COMx (x: your port number)
Baud Rate:	230400
Data:	8bit
Parity:	none
Stop:	1bit
Flow control:	Xon/Xoff
Transmit delay:	0msec/char, 0msec/line
- (4) Click the [OK] button.
- (5) Select [Send File] from [File] menu, and specify the new program (Motorola S-record). “TeraTerm” starts to download the new program.

### 3. Memory Usage



#### 3.1 Update Indicator ([indicator] Area)

The size of the Update Indicator is 4KB. However, it is only 4 bytes that actually used. The value of 4 bytes indicates the following states:

State	Value
"upgrade completed" The upgrade has been completed, and the user program can be executed.	0xAA, 0xAA, 0xAA, 0xAA
"do upgrade" The user program decided to upgrade, but the upgrade has not started.	0x00, 0x00, 0x00, 0x00
"now upgrading" The boot loader is upgrading the user program. The upgrade is not completed.	0xFF, 0xFF, 0xFF, 0xFF

The unused part in this area can be used to record the progress of the upgrade.



### 3. Memory Usage

---

#### 3.2 Reserved RAM for Flash Programming Library ([fpl\_ram] Area)

The self-modifying library is included in the boot loader side, and the RAM used by the library is defined as a part of the boot loader.

When the user program (loaded program) uses “start\_upgrade” function of the boot loader, the flash programming library included in the boot loader works. At this time, the flash programming library uses the [fpl\_ram] area as working space. Therefore, please arrange RAM used in the loadable program so as not to overlap with [fpl\_ram] area.

RAM other than [fpl\_ram] can be used on the loadable program side.



### America

---

#### Epson America, Inc.

Headquarter:  
3840 Kilroy Airport Way  
Long Beach, California 90806-2452 USA  
Phone: +1-562-290-4677

San Jose Office:  
214 Devcon Drive  
San Jose, CA 95112 USA  
Phone: +1-800-228-3964 or +1-408-922-0200

### Europe

---

#### Epson Europe Electronics GmbH

Riesstrasse 15, 80992 Munich,  
Germany  
Phone: +49-89-14005-0      FAX: +49-89-14005-110

### Asia

---

#### Epson (China) Co., Ltd.

4th Floor, Tower 1 of China Central Place, 81 Jianguo Road, Chaoyang  
District, Beijing 100025 China  
Phone: +86-10-8522-1199      FAX: +86-10-8522-1120

#### Shanghai Branch

Room 1701 & 1704, 17 Floor, Greenland Center II,  
562 Dong An Road, Xu Hui District, Shanghai, China  
Phone: +86-21-5330-4888      FAX: +86-21-5423-4677

#### Shenzhen Branch

Room 804-805, 8 Floor, Tower 2, Ali Center, No.3331  
Keyuan South RD(Shenzhen bay), Nanshan District, Shenzhen  
518054, China  
Phone: +86-10-3299-0588      FAX: +86-10-3299-0560

#### Epson Taiwan Technology & Trading Ltd.

15F, No.100, Songren Rd, Sinyi Dist, Taipei City 110. Taiwan  
Phone: +886-2-8786-6688

#### Epson Singapore Pte., Ltd.

1 HarbourFront Place,  
#03-02 HarbourFront Tower One, Singapore 098633  
Phone: +65-6586-5500      FAX: +65-6271-3182

#### Seiko Epson Corp.

##### Korea Office

19F, KLI 63 Bldg, 60 Yoido-dong,  
Youngdeungpo-Ku, Seoul 150-763, Korea  
Phone: +82-2-784-6027      FAX: +82-2-767-3677

---

#### Seiko Epson Corp.

##### Sales & Marketing Division

##### Device Sales & Marketing Department

421-8, Hino, Hino-shi, Tokyo 191-8501, Japan  
Phone: +81-42-587-5816      FAX: +81-42-587-5116