

S1R72U01

Development Support Manual

NOTICE

No part of this material may be reproduced or duplicated in any form or by any means without the written permission of Seiko Epson. Seiko Epson reserves the right to make changes to this material without notice. Seiko Epson does not assume any liability of any kind arising out of any inaccuracies contained in this material or due to its application or use in any product or circuit and, further, there is no representation that this material is applicable to products requiring high level reliability, such as, medical products. Moreover, no license to any intellectual property rights is granted by implication or otherwise, and there is no representation or warranty that anything made in accordance with this material will be free from any patent or copyright infringement of a third party. This material or portions thereof may contain technology or the subject relating to strategic products under the control of the Foreign Exchange and Foreign Trade Law of Japan and may require an export license from the Ministry of Economy, Trade and Industry or other approval from another government agency.

All other product names mentioned herein are trademarks and/or registered trademarks of their respective companies.

Scope of Application

This document applies to the S1R72U01 serial (UART) – USB Host/Device bridge LSI, which supports USB 2.0 FS/LS.

Table of Contents

1. Overview	1
2. History Display Function	2
2.1 Operational Setup.....	2
2.1.1 Hardware configuration	2
2.1.2 RS-232 settings.....	3
2.1.3 HyperTerminal settings.....	3
2.2 Usage Instructions	10
2.2.1 Procedure.....	10
2.2.2 Precautions	11
2.2.3 Key input specifications.....	11
2.2.4 Main menu.....	12
2.2.5 History Display menu	13
2.2.5.1 Show history.....	14
2.2.5.2 Clear history	15
2.2.6 Analog Test menu.....	16
2.3 History Information List.....	17
2.3.1 USB Host.....	17
2.3.2 USB Device.....	18
2.3.3 SIO.....	19
2.4 System Startup Checking Procedure.....	20
2.4.1 USB Host.....	20
2.4.2 USB Device.....	21
2.5 Unrequested Display.....	22
2.5.1 USB Host.....	22
2.5.1.1 USBH: Report error	22
2.5.1.2 USBH: unsupported device	22
2.5.1.3 USBH: LS device.....	22
2.5.1.4 USBH: FS device	22
2.5.2 USB Device	23
2.5.2.1 USBD: Report error	23
2.5.2.2 USBD: Transfer error [0xXX]	23
2.5.2.3 USBD: Disconnect.....	23
2.5.2.4 USBD: RESET[XX].....	23
2.5.2.5 USBD: SUSPEND	23
2.5.2.6 USBD: RESUME	23
2.5.3 SIO.....	24
2.5.3.1 SIO: EIReq error[0xXX]	24
2.5.3.2 SIO: parity error.....	24

2.5.3.3	SIO: framing error.....	24
2.5.3.4	SIO: noise detection.....	24
2.5.3.5	SIO: buffer overflow.....	24
2.6	Not Displayed.....	25
2.6.1	USB Host.....	25
2.6.1.1	USBH: HID device.....	25
2.6.1.2	USBH: LS device.....	25
2.6.1.3	USBH: FS device.....	25
2.6.1.4	USBH: hub device.....	25
2.6.1.5	USBH: unsupported device.....	25
2.6.1.6	USBH: more than 2 support devices.....	25
2.6.1.7	USBH: more than 2 hubs.....	25
2.6.1.8	USBH: VBUS overcurrent.....	26
2.6.1.9	USBH: send Output Report.....	26
2.6.1.10	USBH: recv Input Report.....	26
2.6.1.11	USBH: send Feature Report.....	26
2.6.1.12	USBH: recv Feature Report.....	26
2.6.2	USB Device.....	27
2.6.2.1	USBD: Connected.....	27
2.6.2.2	USBD: Disconnect.....	27
2.6.2.3	USBD: RESET[XX].....	27
2.6.2.4	USBD: SUSPEND.....	27
2.6.2.5	USBD: RESUME.....	27
2.6.2.6	USBD: SETUP[0xXX].....	27
2.6.2.7	USBD: send Input Report.....	28
2.6.2.8	USBD: recv Output Report.....	28
2.6.2.9	USBD: send Feature Report.....	28
2.6.2.10	USBD: recv Feature Report.....	28
2.6.2.11	USBD: set protocol[0xXX].....	28
2.6.3	SIO.....	29
2.6.3.1	SIO: idle.....	29
2.6.3.2	SIO: recv EIReq[0xXX].....	29
2.6.3.3	SIO: send data.....	29
2.6.3.4	SIO: recv data.....	29
2.6.3.5	SIO: set serial port[0xXX].....	29
3.	USB Analog Test Function.....	30
4.	Download Function.....	31
4.1	Download Data.....	31
4.1.1	Data structure.....	32
4.1.2	CRC.....	33
4.2	TPL.....	34

4.3	Descriptor	35
4.4	Support Tools	35
4.4.1	TPL tool	37
4.4.2	Descriptor tool	39
5.	NSF Function	40
5.1	TPL.....	40
5.2	ManyDev.....	40
5.3	ManyHub	40
5.4	VBUS_Cur	40
	Revision History	41

1. Overview

This document is the Development Support Manual for the S1R72U01 serial (UART) – USB Host/Device bridge LSI, which supports USB 2.0 FS/LS (hereinafter referred to as the “LSI”). This document describes various technical aspects pertaining to functions and data.

This document uses the terminology defined in “Terminology” in the *S1R72U01 Technical Manual*.

The LSI includes the following two functions to support development of a system (i.e., a product incorporating the S1R72U01):

- History Display Function
- USB Analog Test Function

The LSI includes functions that allow users to download the data required for USB Host/Device operations to the LSI. Some support tools for creating download data are provided.

The USB Host for the LSI includes an NSF (No Silent Failures) function that meets USB standard.

2. History Display Function

2. History Display Function

The LSI retains a history of SIO and USB states that can be viewed using Terminal Software via a RS-232 connection.

The history displays past information in chronological sequence, enabling review of operations leading to the current state.

Up to 64 history information items can be displayed.

2.1 Operational Setup

This section describes setup before using the History Display Function.

2.1.1 Hardware configuration

Fig. 2-1 illustrates a typical hardware configuration using this function.

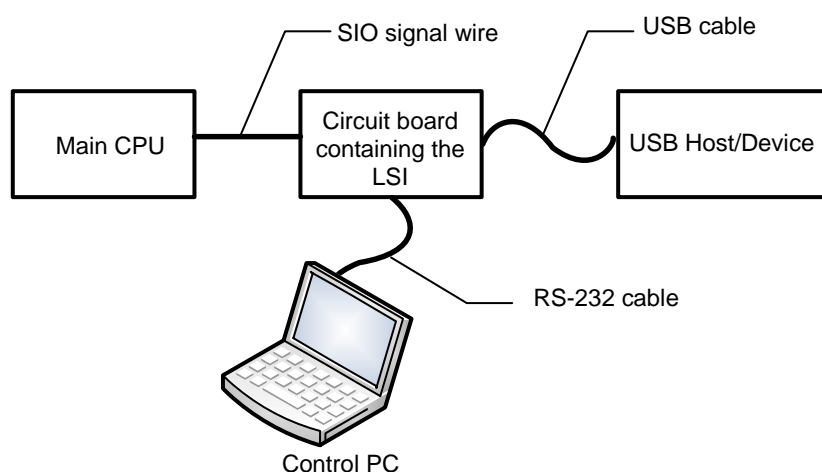


Fig. 2-1 Hardware configuration

- Circuit board containing the LSI

The circuit board on which the LSI is mounted; controlled by the control PC.

- Main CPU

The source from which commands (EI requests) are issued to operate the LSI.

- USB Host/Device

Connected for SIO-USB bridge operations using the LSI.

- Control PC

The PC used for controlling this function. It operates using Terminal Software via an RS-232 connection.

For more information on RS-232 settings, refer to “2.1.2 RS-232 settings” or “2.1.3 HyperTerminal settings”.

2.1.2 RS-232 settings

Set the control PC RS-232 settings as shown in Table 2-1.

If using HyperTerminal, refer to “2.1.3 HyperTerminal settings”.

Table 2-1 RS-232/Terminal Software settings

Parameter	Setting
Baud rate (bps)	38,400
Data bits	8
Parity	None
Stop bits	1
Flow control	None
Encoding format	Shift-JIS
Local echo	On

2.1.3 HyperTerminal settings

The RS-232 connection can be set by HyperTerminal if the control PC runs a Windows (Windows XP, Windows 2000) operating system.

The procedure for setting the RS-232 connection using HyperTerminal is described below.

Step 1: Launch

Launch HyperTerminal by selecting **Start** → **Programs** → **Accessories** → **Communications** → **HyperTerminal**.

2. History Display Function

Step 2: Setting the connection name

Enter the desired name for the connection in **Name**.

Select the desired icon.

Click **OK**.



Fig. 2-2 Setting the connection name

Step 3: Checking and selecting the Communications Port

Select the available port in **Connect using**. For more information on checking ports, refer to “Port checking” below.

Click **OK**.



Fig. 2-3 Selecting the Communications Port

2. History Display Function

- Port checking

The available ports can be checked using **Ports (COM and LPT)** in **Device Manager**.

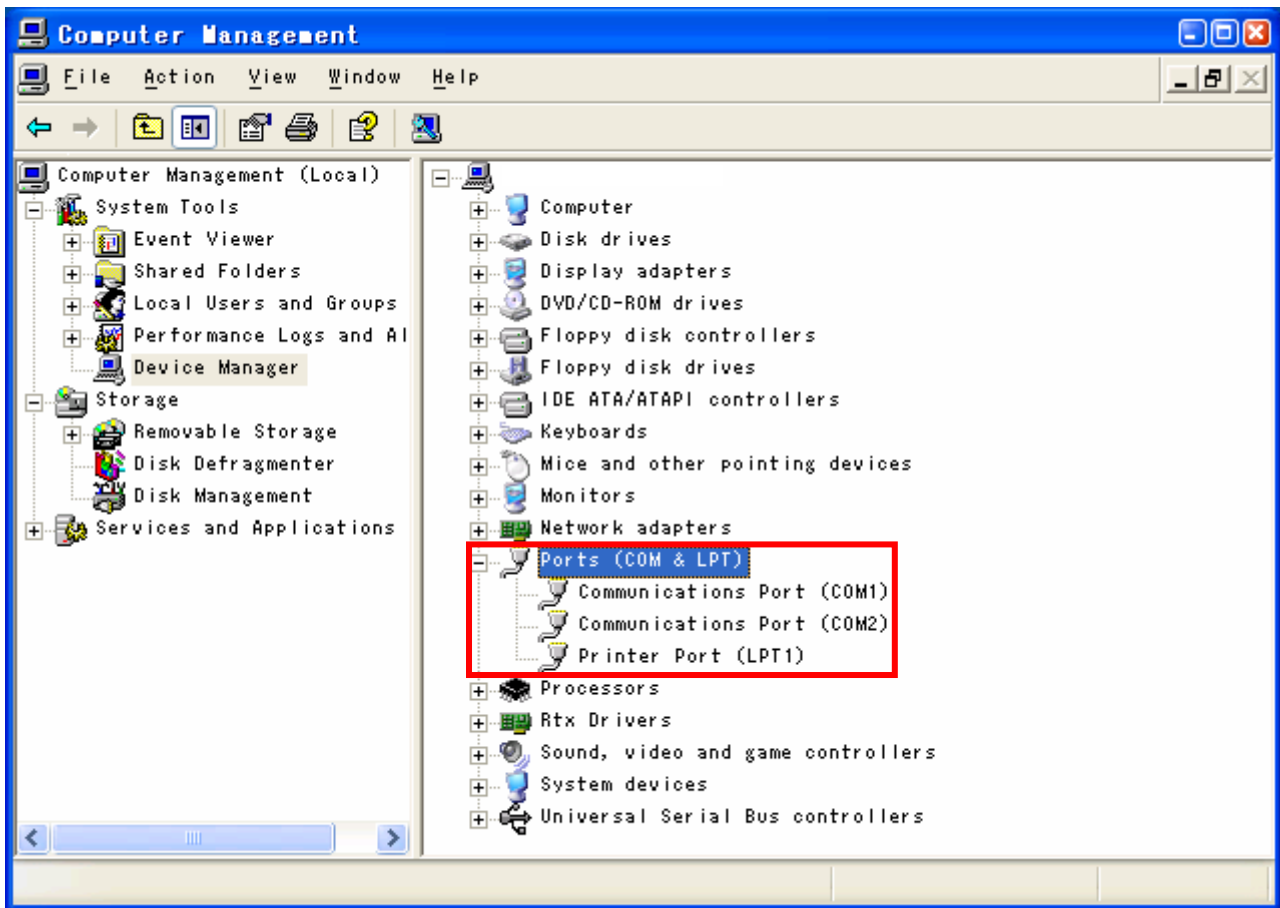


Fig. 2-4 Port checking

Step 4: Port setting

Set the **Port Settings** items as shown in Fig. 2-5. (Refer to “2.1.2 RS-232 settings”.)

Click **OK**.

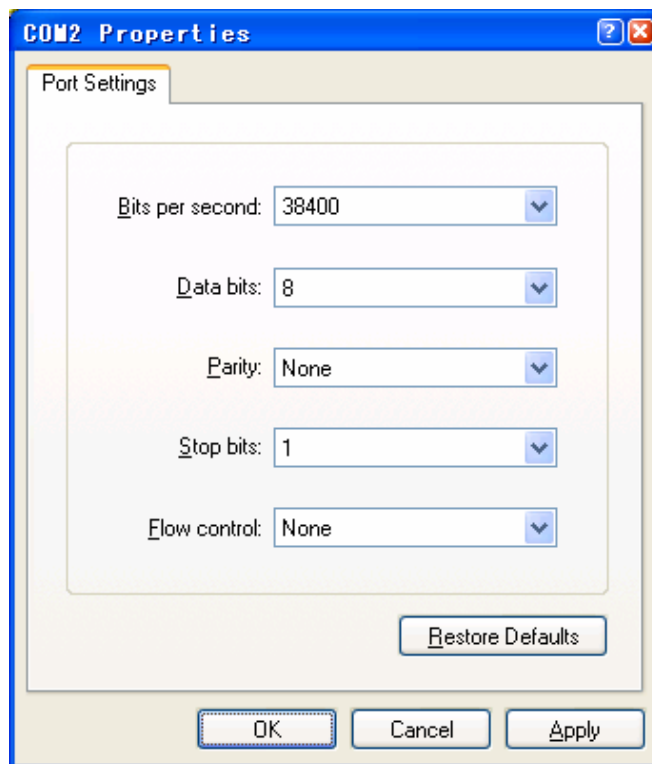


Fig. 2-5 Port setting

Step 5: Disconnection

The HyperTerminal connection must be disconnected before changing the encoding format settings, ASCII settings, or settings shown in Step 4 again.

Click the **Disconnect** icon shown in Fig. 2-6.

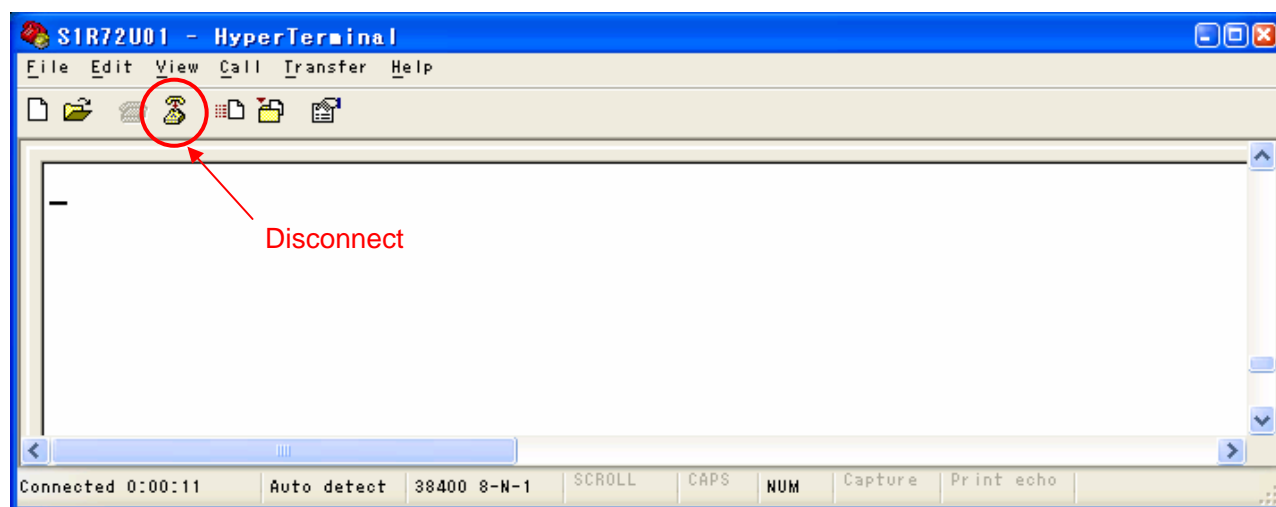


Fig. 2-6 Main screen (Disconnection)

2. History Display Function

Step 6: Encoding method setting

Select **File** → **Properties** → **Setting** in Fig. 2-6 and set as shown in Fig. 2-7.

Click **Input Translation...**, check **Shift-JIS** as shown in Fig. 2-8, and click **OK**.

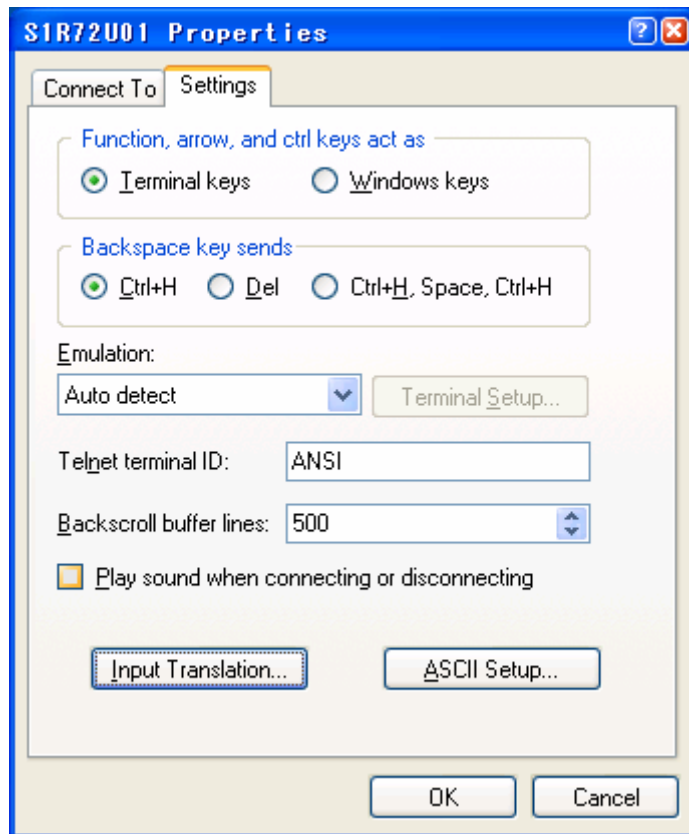


Fig. 2-7 Properties

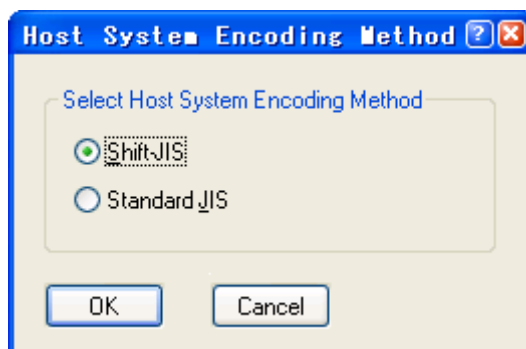


Fig. 2-8 Encoding method setting

Step 7: ASCII setting

Click **ASCII Setup** in the Properties screen shown in Fig. 2-7, set as shown in Fig. 2-9.

Click **OK**.

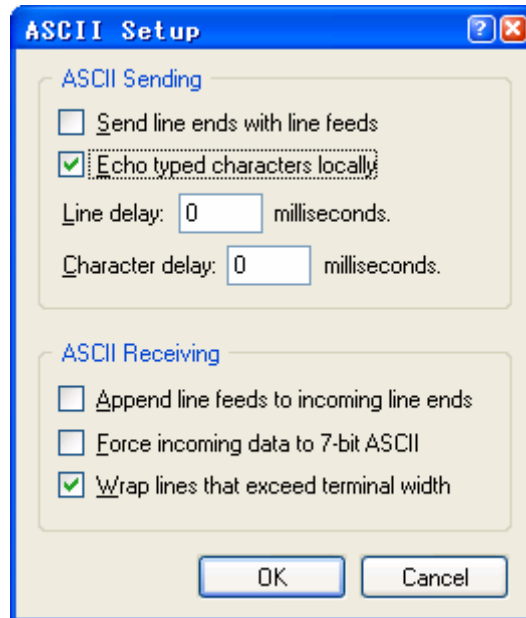


Fig. 2-9 ASCII setting

Step 8: Connection

Select **File** → **Save** to save the settings. Once saved, these settings can be reloaded later.

Click the **Call** icon shown in Fig. 2-10 to start the connection and use the History Display Function.

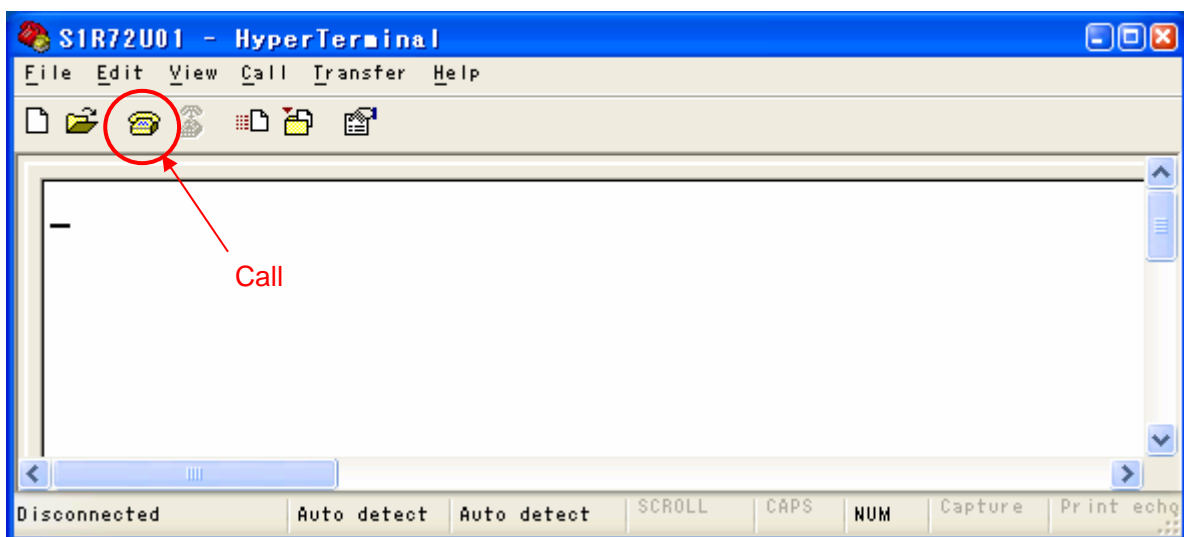


Fig. 2-10 Main screen (Connection)

2. History Display Function

2.2 Usage Instructions

This section describes how to use the History Display Function.

2.2.1 Procedure

This function can be operated as shown in the procedures in Fig. 2-11.

For more information on key input procedures, refer to “2.2.3 Key input specifications”.

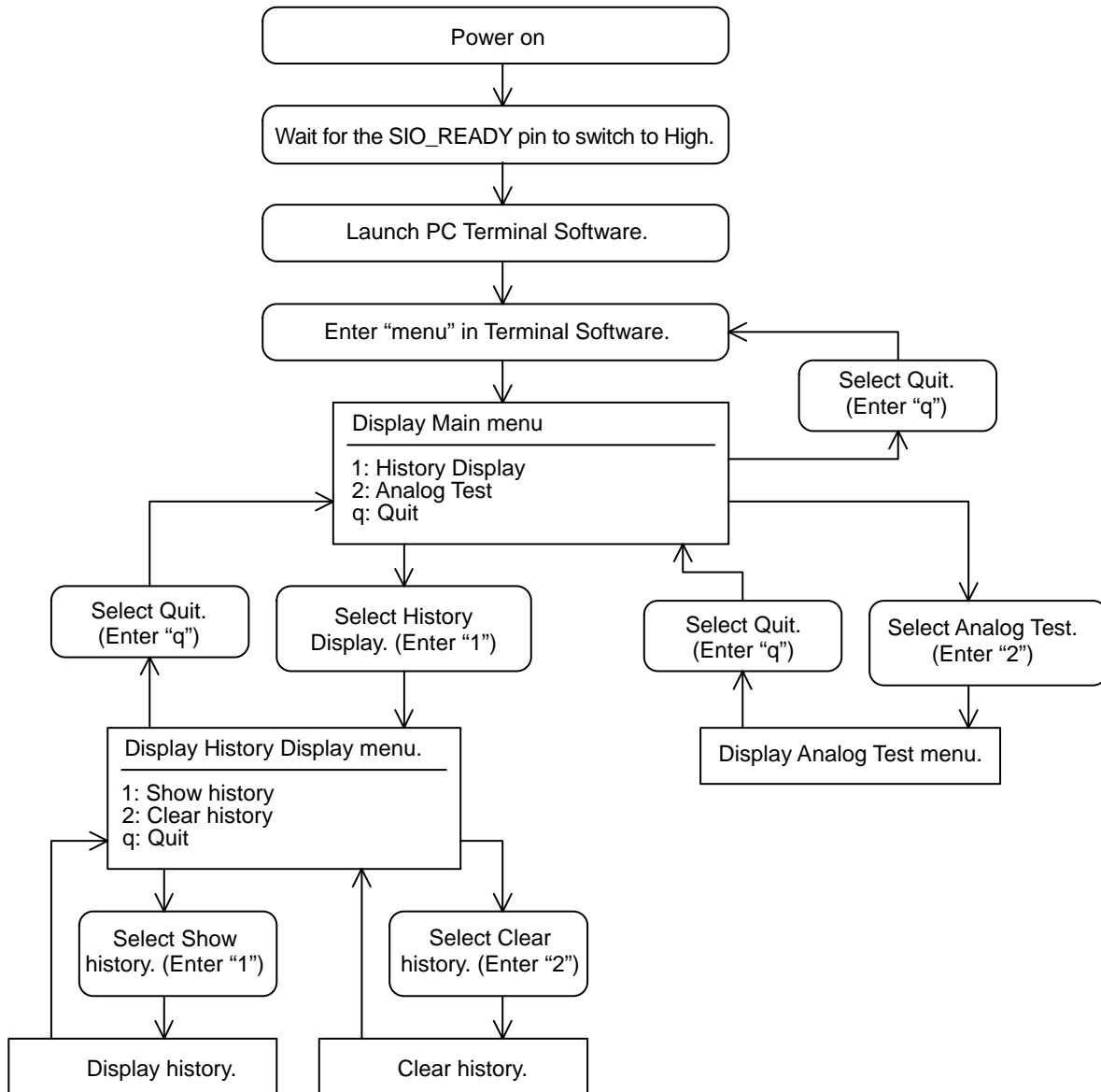


Fig. 2-11 Procedures

2.2.2 Precautions

1. Before using this function, check that the SIO_READY pin is at High after power has been turned on for the LSI. If the SIO_READY pin has not been switched to High, the power supply or clock source may fail to meet the electrical characteristics given in the *S1R72U01 Data Sheet*.
2. This function cannot be used if the LSI switches to Sleep state while the function is in use. For more information on recovering from Sleep state, refer to the *S1R72U01 Technical Manual*.

2.2.3 Key input specifications

The key input specifications on the Terminal Software screen are as follows:

1. Use the Enter key to enter text input.
2. Only single-byte alphanumeric input is accepted. Double-byte (Japanese) input is not accepted.
3. Text input is not case-sensitive.

The following error message will appear if the text input is incorrect.

[It is an input value error. Try to input it.]

Refer to “2.2.1 Procedure” or the corresponding menu item and enter the correct text.

2. History Display Function

2.2.4 Main menu

Enter **“menu”** on the Terminal Software screen and press the Enter key to display the Main menu, as shown in Fig. 2-12.

If text cannot be entered on the screen, review the operational setup. For more information, refer to “2.1 Operational Setup”.

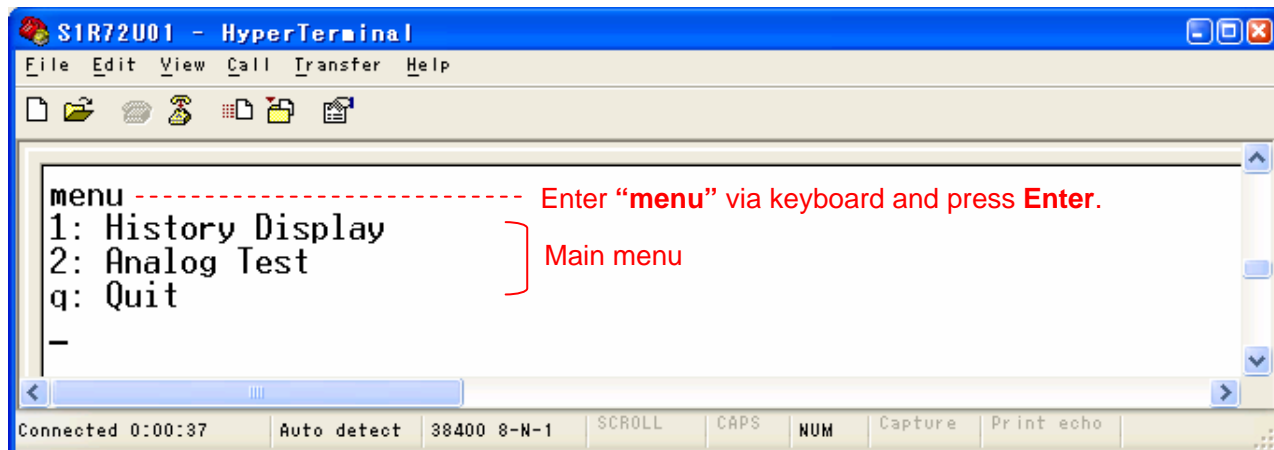


Fig. 2-12 Main menu

- History Display

Starts the History Display Function.

For more information, refer to “2.2.5 History Display menu”.

- Analog Test

For more information, refer to “2.2.6 Analog Test menu”.

- Quit

Enter **“q”** and press the Enter key to quit the Main menu.

To display the Main menu again, enter **“menu”** and press the Enter key.

2.2.5 History Display menu

Enter “1” in the Main menu and press the Enter key to display the menu as shown in Fig. 2-13.

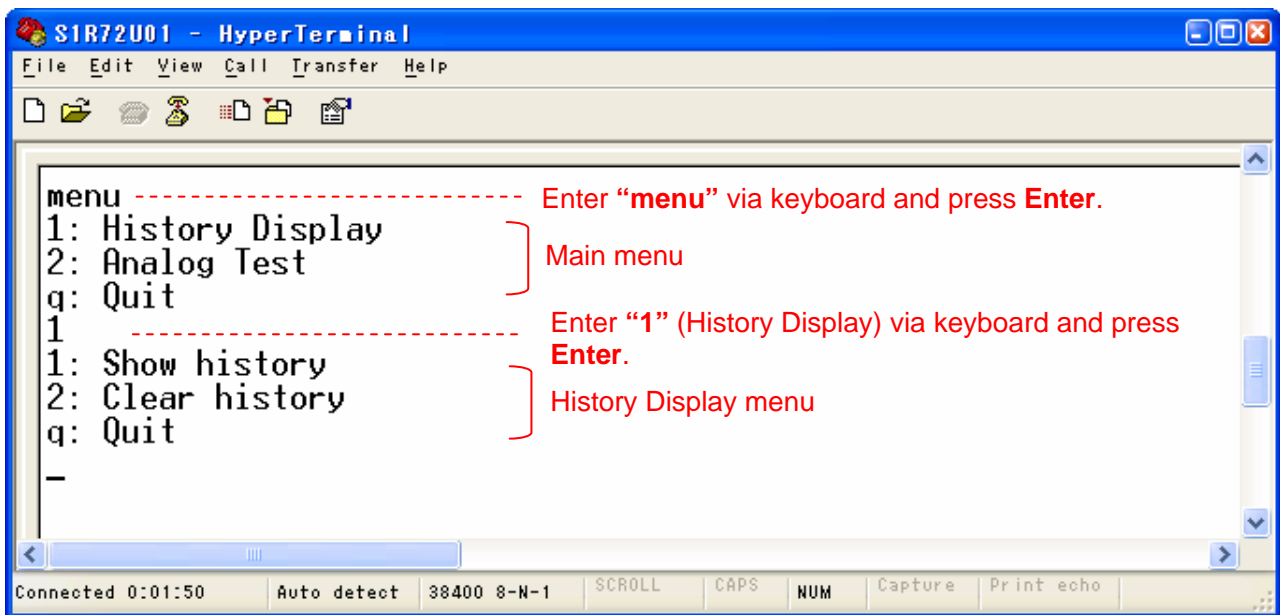


Fig. 2-13 History Display menu

- Show history

Displays history information.

For more information, refer to “2.2.5.1 Show history”.

- Clear history

Clears history information stored in the LSI.

For more information, refer to “2.2.5.2 Clear history”.

- Quit

Enter “q” and press the Enter key to quit the History Display menu and display the Main menu.

2. History Display Function

2.2.5.1 Show history

Enter “1” in the History Display menu and press the Enter key to display the history and to display the History Display menu once again.

For more information on the history displayed, refer to “2.3 History Information List”.

Fig. 2-14 shows an example.

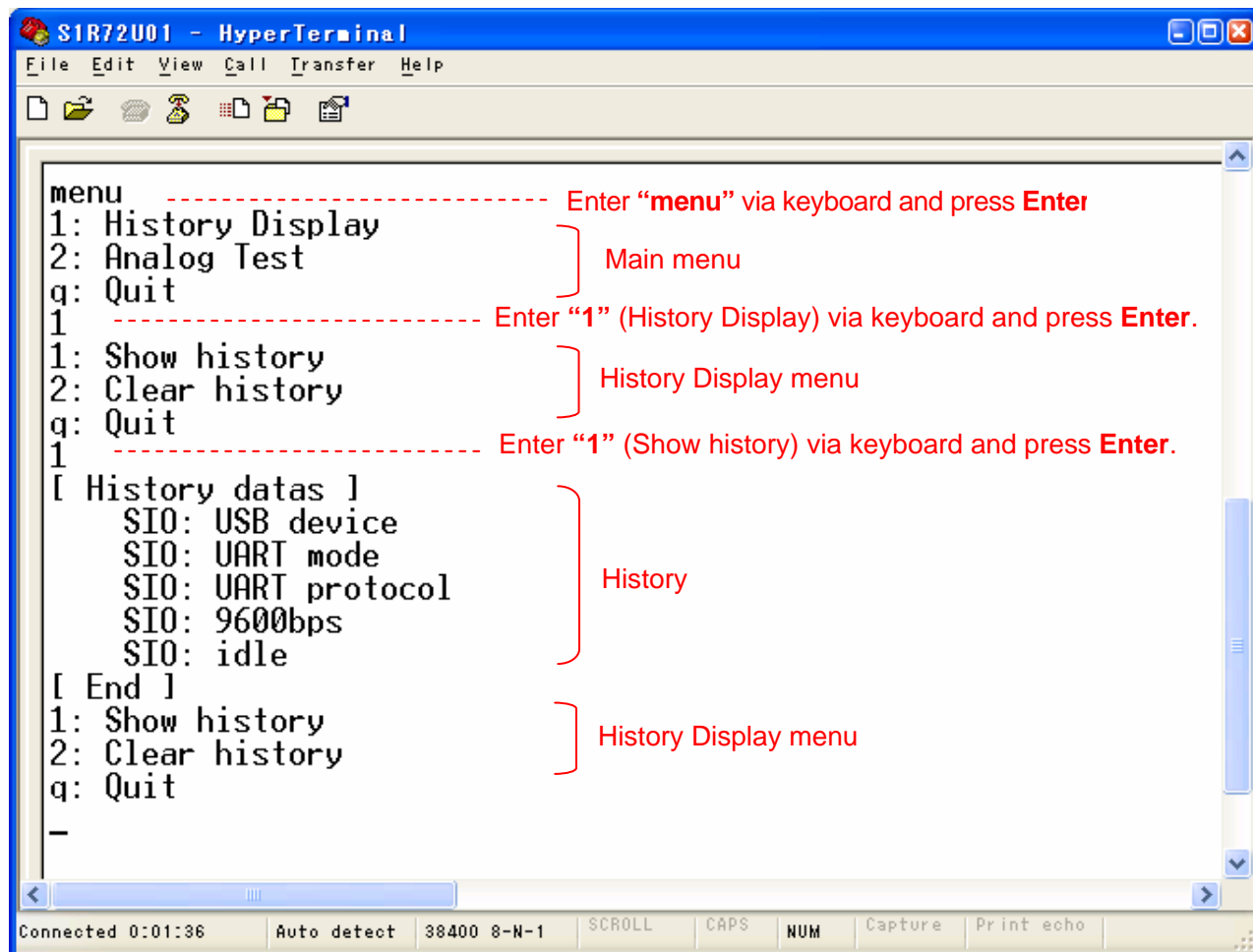


Fig. 2-14 Show history

2.2.5.2 Clear history

Enter “2” in the History Display menu and press the Enter key to clear the entire history information held in the LSI and to display the History Display menu once again.

Selecting **Show history** after clearing the history will not display the history previously displayed.

Fig. 2-15 shows an example.

```

q: Quit
1
[ History datas ]
  SIO: USB device
  SIO: UART mode
  SIO: UART protocol
  SIO: 9600bps
  SIO: idle
[ End ]
1: Show history
2: Clear history
q: Quit
2 ----- Enter "2" (Clear history) via keyboard and press Enter.
[ Cleared Message ]
1: Show history
2: Clear history
q: Quit
1 ----- Enter "1" (Show history) via keyboard and press Enter.
[ History datas ]
[ End ]
1: Show history
2: Clear history
q: Quit
-
  
```

Fig. 2-15 Clear history

2. History Display Function

2.2.6 Analog Test menu

Enter “2” in the Main menu and press the Enter key to display the menu, as shown in Fig. 2-16. This menu appears only if the LSI is operating as a USB Host. It cannot be displayed when operating as a USB Device.

For more information on USB analog tests, refer to “3. USB Analog Test Function”.

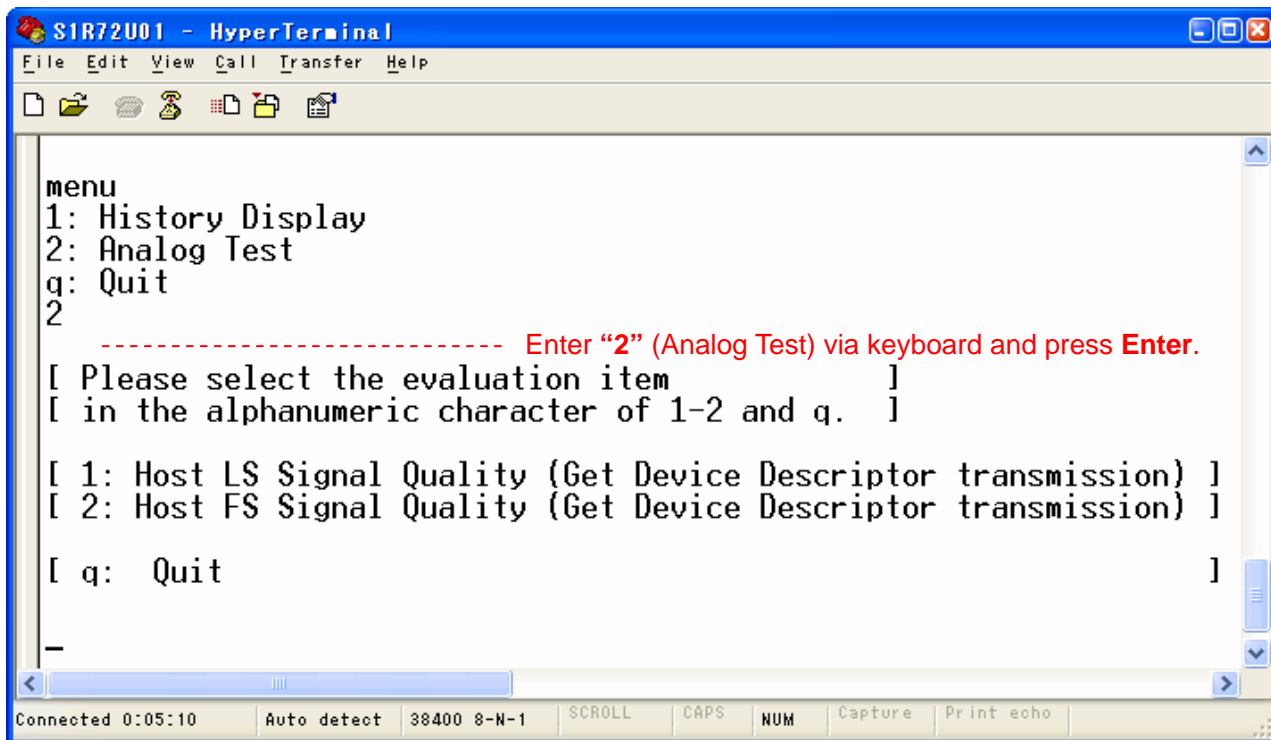


Fig. 2-16 Analog Test menu

2.3 History Information List

This section describes the history information displayed.

The same history can be displayed multiple times, depending on the LSI operating state.

Up to 64 history items can be displayed. If the history exceeds 64 items, the newest items displayed will overwrite the oldest items.

2.3.1 USB Host

Table 2-2 shows the USB Host history information.

Table 2-2 USB Host history information

History	Details
USBH: HID device	HID Class Device was connected. *1
USBH: LS device	LS Device was connected. *1, *2
USBH: FS device	FS Device was connected. *1, *2
USBH: hub device	Device with HUB function was connected. *1
USBH: unsupported device	Unsupported Devices were connected. *1
USBH: more than 2 support devices	Two or more HID Class Devices were connected. *1
USBH: more than 2 hubs	Two or more Devices with HUB function were connected. *1
USBH: VBUS overcurrent	VBUS overcurrent was detected.
USBH: send Output Report	Output Report data was transmitted to an HID Class Device.
USBH: recv Input Report	Input Report data was received from an HID Class Device.
USBH: send Feature Report	Feature Report data was transmitted to an HID Class Device.
USBH: recv Feature Report	Feature Report data was received from an HID Class Device.
USBH: Report error	Error occurred in Report data transmission/reception.

*1 The LSI recognizes up to three connected Devices (including HUBs and unsupported Devices). This history will not appear if four or more Devices are connected.

If this history does not appear when three or less Devices are connected, refer to “2.6 Not Displayed”.

*2 This history will not appear when Devices connected to HUBs connected to the LSI.

2. History Display Function

2.3.2 USB Device

Table 2-3 shows the USB Device history information.

Table 2-3 USB Device history information

History	Details
USBD: Connected	Was connected to Host. *1
USBD: Disconnect	Not connected to Host. *2
USBD: RESET[XX]	USB BUS reset was detected. [XX] is LS or FS.
USBD: SUSPEND	USB Suspend was detected.
USBD: RESUME	USB Resume was detected.
USBD: SETUP[0xXX]	SETUP packet was received from Host. [0xXX] is SETUP packet value (*3).
USBD: send Input Report	Input Report data was transmitted to Host.
USBD: recv Output Report	Output Report data was received from Host.
USBD: send Feature Report	Feature Report data was transmitted to Host.
USBD: recv Feature Report	Feature Report data was received from Host.
USBD: set protocol[0xXX]	Protocol changes were received from Host. [0xXX] is set value of protocol mode (*4).
USBD: Report error	Error occurred in Report data transmission/reception.
USBD: Transfer error[0xXX]	Error occurred in USB transfer. [0xXX] is Endpoint Address (*3).

*1 This history is displayed when power is supplied to the VBUS.

*2 This history is displayed when power is no longer supplied to the VBUS.

*3 For more information, refer to the USB standard described under “Normative Standard” in the *S1R72U01 Technical Manual*.

*4 For more information, refer to “Data” described for “GET PROTOCOL MODE” (25h) in the *S1R72U01 Technical Manual*.

2.3.3 SIO

Table 2-4 shows SIO history information.

Table 2-4 SIO history information

History	Details
SIO: idle	State in which EI requests can be received from Main CPU.
SIO: recv EIReq[0xXX]	EI request was received from Main CPU. [0xXX] is EI request EIreq code (*1).
SIO: send data	Data transmission to Main CPU started.
SIO: recv data	Data reception from Main CPU started.
SIO: set serial port[0xXX]	Serial Port setting was received from Main CPU. [0xXX] is set value of serial port (*2).
SIO: EIReq error[0xXX]	An error occurred in EI request. [0xXX] is error information (*3).
SIO: parity error	Parity error was detected.
SIO: framing error	Framing error was detected.
SIO: noise detection	Noise was detected in data.
SIO: buffer overflow	Overflow occurred in receive buffer.
SIO: USB host	USB is set as Host.
SIO: USB device	USB is set as Device.
SIO: UART mode	SIO is set to UART Mode (H/W setting)
SIO: UART protocol	SIO is set to UART Protocol (F/W setting)
SIO: 300bps	UART protocol initial baud rate is set to 300 bps.
SIO: 9600bps	UART protocol initial baud rate is set to 9,600 bps.

*1 For more information, refer to “Command Specifications” in the *S1R72U01 Technical Manual*.

*2 For more information, refer to “Information data” described for the “SERIAL PORT” (F8h) in the *S1R72U01 Technical manual*.

*3 For more information, refer to “Host error information” or “Device error information” in the *S1R72U01 Technical manual*.

2. History Display Function

2.4 System Startup Checking Procedure

The History Display Function can be used to check the SIO settings and communication state. The procedure for checking at system startup is shown below.

Check the details described in the procedure. If all of the review items can be performed as described in the procedure, the settings and basic communication state are correct.

2.4.1 USB Host

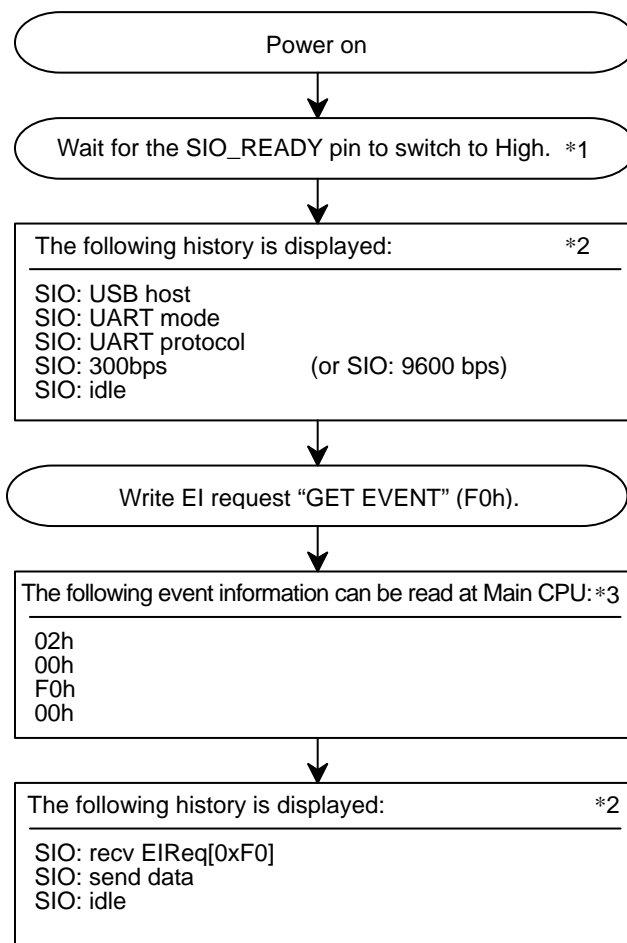


Fig. 2-17 Checking procedure at USB Host system startup

If unable to confirm the details of the system startup checking procedure, check the following:

- *1 Check the details in "2.2.2 Precautions".
- *2 Refer to "2.5 Unrequested Display" or "2.6 Not Displayed".
- *3 Check the following details:
 - (1) "UART setting" in the *S1R72U01 Technical Manual*.
 - (2) UART signal quality
 - (3) Connection between Main CPU and LSI (circuit board wiring, etc.)

2.4.2 USB Device

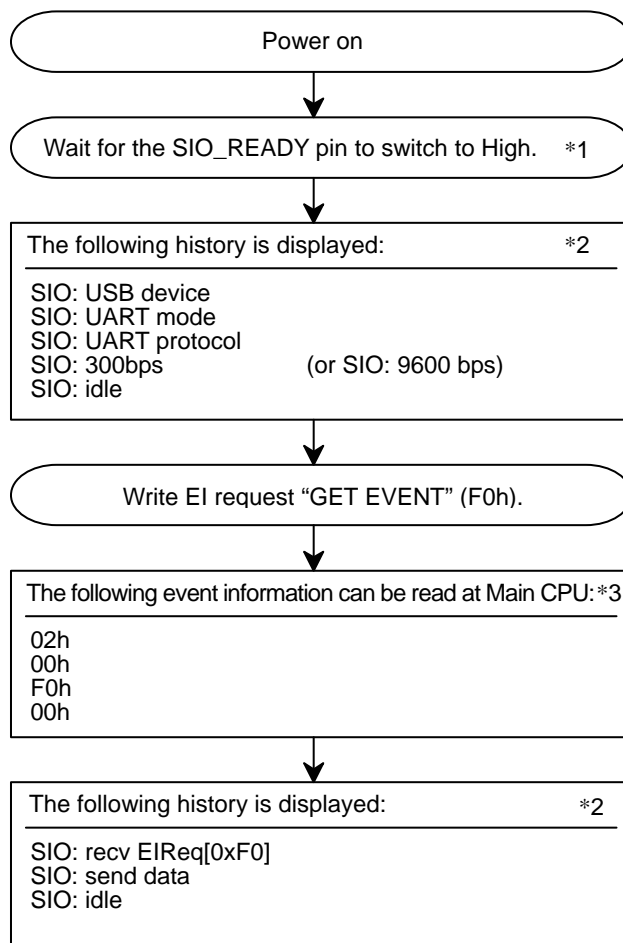


Fig. 2-18 Checking procedure at USB Device system startup

If unable to confirm the details of the system startup checking procedure, check the following:

- *1 Check the details in “2.2.2 Precautions”.
- *2 Refer to “2.5 Unrequested Display” or “2.6 Not Displayed”.
- *3 Check the following details:
 - (1) “UART setting” in the *S1R72U01 Technical Manual*.
 - (2) UART signal quality
 - (3) Connection between Main CPU and LSI (circuit board wiring, etc.)

2. History Display Function

2.5 Unrequested Display

This section describes how to perform reviews when the history appears without prompting (hereafter referred to as the “unrequested display”) during review using the History Display Function.

2.5.1 USB Host

Check the corresponding history if the unrequested display occurs when the LSI operates as a Host.

2.5.1.1 USBH: Report error

- (1) The information registered for the LSI in “REPORT ID REGISTRATION” (11h) may not match the descriptor information obtained from the Device by the Main CPU. Check the information registered.
- (2) The information registered for the LSI in (1) may not match the Report data written by the Main CPU. Check the information registered.
- (3) The information registered for the LSI in (1) may not match the Report data received from the Device. Check the information registered.
- (4) There may be a problem with the circuit board wiring or USB cable signal quality. Check “Other” described for the HID Class Overview in the *S1R72U01 Technical Manual*.

2.5.1.2 USBH: unsupported device

- (1) The descriptor size or Interface Descriptor from the HID Class Device connected to the LSI may fall outside specifications.

Check “Device connection” and “Precautions” described for Host function in the *S1R72U01 Technical Manual*.

- (2) A Device other than an HID Class Device may be connected to the LSI.

2.5.1.3 USBH: LS device

There may be a problem with the circuit board wiring or USB cable signal quality. Check “Other” described for the HID Class Overview in the *S1R72U01 Technical Manual*.

2.5.1.4 USBH: FS device

Refer to “2.5.1.3 USBH: LS device”.

2.5.2 USB Device

Check the corresponding history if the unrequested display occurs when the LSI operates as a Device.

2.5.2.1 USB: Report error

- (1) The Report data written by the Main CPU may not match the Report information downloaded to the LSI.
Check the Report information.
- (2) The Report data received from the Host may not match the Report information downloaded to the LSI.
Check the Report information.

2.5.2.2 USB: Transfer error [0xXX]

- (1) There may be a problem with the circuit board wiring or USB cable signal quality. Check “Other” described for the HID Class Overview in the *S1R72U01 Technical Manual*.
- (2) The electrical characteristics may fail to meet the specifications given in the *S1R72U01 Data Sheet*.

2.5.2.3 USB: Disconnect

The USB cable may not have been connected or may be broken.

2.5.2.4 USB: RESET[XX]

Refer to “2.5.2.3 USB: Disconnect”.

2.5.2.5 USB: SUSPEND

Refer to “2.5.2.3 USB: Disconnect”.

2.5.2.6 USB: RESUME

Refer to “2.5.2.3 USB: Disconnect”.

2. History Display Function

2.5.3 SIO

Check the corresponding history if the unrequested display related to SIO occurs.

2.5.3.1 SIO: EIReq error[0xXX]

- (1) The EI request written to the LSI may not comply with command specifications. Refer to “Command Specifications” in the *S1R72U01 Technical Manual*.
- (2) An error may have occurred in the USB connected to the LSI. Check the corresponding USB history.

2.5.3.2 SIO: parity error

- (1) Recheck the UART settings.
- (2) There may be a problem with the circuit board wiring or SIO signal quality. Check “Other” described for the HID Class Overview in the *S1R72U01 Technical Manual*.

2.5.3.3 SIO: framing error

Refer to “2.5.3.2 SIO: parity error”.

2.5.3.4 SIO: noise detection

Refer to “2.5.3.2 SIO: parity error”.

2.5.3.5 SIO: buffer overflow

Set the UART baud rate to low speed.

2.6 Not Displayed

This section describes how to perform reviews when the history does not appear as desired (hereafter referred to as the “not displayed”) during review using the History Display Function.

2.6.1 USB Host

Check the corresponding condition if the history information described below is not displayed when the LSI operates as a Host.

2.6.1.1 USBH: HID device

- (1) A Device other than an HID Class Device may be connected to the LSI.
- (2) Recognition of the connected HID Class Device may have failed. Check by the following methods.
 - A) Reconnect the HID Class Device.
 - B) Connect a different HID Class Device.
 - C) Use a different USB cable.
- (3) Four or more Devices may be connected to the LSI. For more information, refer to “2.3 History Information List”.
- (4) Multiple Interface Descriptors may be mounted in the HID Class Device connected to the LSI. Check “Device connection” described for Host function in the *S1R72U01 Technical Manual*.
- (5) The HID Class Device connected may not match the protocol of the LSI. Refer to “Precautions” described for HID Class EI requests in the *S1R72U01 Technical Manual*.

2.6.1.2 USBH: LS device

Refer to “2.6.1.1 USBH: HID device” (2) to (5).

2.6.1.3 USBH: FS device

Refer to “2.6.1.1 USBH: HID device” (2) to (5).

2.6.1.4 USBH: hub device

Refer to “2.6.1.1 USBH: HID device” (2) to (5).

2.6.1.5 USBH: unsupported device

Refer to “2.6.1.1 USBH: HID device” (2).

2.6.1.6 USBH: more than 2 support devices

Refer to “2.6.1.1 USBH: HID device” (2) to (5).

2.6.1.7 USBH: more than 2 hubs

Refer to “2.6.1.1 USBH: HID device” (2) to (5).

2. History Display Function

2.6.1.8 USBH: VBUS overcurrent

VBUS overcurrent detection may be prohibited.

2.6.1.9 USBH: send Output Report

- (1) The EI request written to the LSI may not comply with command specifications. Refer to “Command Specifications” in the *S1R72U01 Technical Manual*.
- (2) The information registered for the LSI in “REPORT ID REGISTRATION” (11h) may not match the Report data written by the Main CPU. Check the information registered.

2.6.1.10 USBH: recv Input Report

- (1) The EI request written to the LSI may not comply with command specifications. Refer to “Command Specifications” in the *S1R72U01 Technical Manual*.
- (2) The information registered for the LSI in “REPORT ID REGISTRATION” (11h) may not match the Report data received from the Device. Check the information registered.

2.6.1.11 USBH: send Feature Report

Refer to “2.6.1.9 USBH: send Output Report”.

2.6.1.12 USBH: recv Feature Report

Refer to “2.6.1.10 USBH: recv Input Report”.

2.6.2 USB Device

Check the corresponding condition if the history information described below is not displayed when the LSI operates as a Device.

2.6.2.1 USBD: Connected

- (1) HID Class may not have started.

For more information on starting HID Class method, refer to the *S1R72U01 Technical Manual*.

- (2) Check the descriptor downloaded to the LSI.
- (3) The USB cable may not have been connected or may be broken.

2.6.2.2 USBD: Disconnect

Refer to “2.6.2.1 USBD: Connected” (1) and (2).

2.6.2.3 USBD: RESET[XX]

- (1) The USB BUS may not be in the Reset state.
- (2) The USB cable may not have been connected or may be broken.
- (3) There may be a problem with the circuit board wiring or USB cable signal quality. Check “Other” described for the HID Class Overview in the *S1R72U01 Technical Manual*.

2.6.2.4 USBD: SUSPEND

- (1) The USB BUS may not be in the Suspend state.
- (2) Refer to “2.6.2.3 USBD: RESET[XX]” (2) and (3).

2.6.2.5 USBD: RESUME

- (1) The USB BUS may not be in the Resume state.
- (2) Refer to “2.6.2.3 USBD: RESET[XX]” (2) and (3).

2.6.2.6 USBD: SETUP[0xXX]

- (1) There may be a problem with the circuit board wiring or USB cable signal quality. Check “Other” described for the HID Class Overview in the *S1R72U01 Technical Manual*.
- (2) The electrical characteristics may fail to meet the specifications given in the *S1R72U01 Data Sheet*.
- (3) The Host may not have transmitted a SETUP packet.

2. History Display Function

2.6.2.7 USBD: send Input Report

- (1) The Host may not have accessed the LSI to acquire Input Report data.
- (2) The Report data written by the Main CPU may not match the Report information downloaded to the LSI.
Check the Report information.

2.6.2.8 USBD: recv Output Report

- (1) The Main CPU may not have read the Output Report data.
- (2) The Host may not have transmitted the Output Report data.
- (3) Check the descriptor downloaded to the LSI.

2.6.2.9 USBD: send Feature Report

- (1) The Host may not have accessed the LSI to acquire the Feature Report data.
- (2) The Report data written by the Main CPU may not match the Report information downloaded to the LSI.
Check the Report information.

2.6.2.10 USBD: recv Feature Report

- (1) The Main CPU may not have read the Feature Report data.
- (2) The Host may not have transmitted the Feature Report data.
- (3) Check the descriptor downloaded to the LSI.

2.6.2.11 USBD: set protocol[0xXX]

- (1) The Host may not have transmitted the set protocol.
- (2) Check the descriptor downloaded to the LSI.

2.6.3 SIO

Check the corresponding history if the SIO history is not displayed.

2.6.3.1 SIO: idle

- (1) If NAK continues to be sent from the Device when the LSI operates as a Host, perform a hardware reset (XRESET).
- (2) Access from the Host may have ceased when the LSI operates as a Device.
- (3) If (1) and (2) are normal, perform a hardware reset (XRESET).

2.6.3.2 SIO: recv EIReq[0xXX]

- (1) There may be a problem with the circuit board wiring or SIO signal quality. Check “Other” described for the HID Class Overview in the *S1R72U01 Technical Manual*.
- (2) Check that the actual communication matches the UART settings.

2.6.3.3 SIO: send data

- (1) The Host or Device connected to the LSI may be malfunctioning.
- (2) The Host or Device connected to the LSI may not comply with USB standard. Check “Other” described for the HID Class Overview in the *S1R72U01 Technical Manual*.
- (3) Check the USB signal quality.

2.6.3.4 SIO: recv data

Refer to “2.6.3.2 SIO: recv EIReq[0xXX]”.

2.6.3.5 SIO: set serial port[0xXX]

Refer to “2.6.3.2 SIO: recv EIReq[0xXX]”.

3. USB Analog Test Function

3. USB Analog Test Function

For more information on this function, refer to the *S1R72U01 Embedded Host Compliance Guide*.

This function is for the Host only.

The LSI should be subjected to a hardware reset (XRESET) after analog testing ends.

4. Download Function

This function allows downloading of TPL and descriptors.

For more information on download commands, refer to the *S1R72U01 Technical Manual*.

A tool is provided to allow the user to create download data. Refer to “4.4 Support Tools” for specifics.

4.1 Download Data

Download data is comprised of a **Header** and **Data**, as shown in Fig. 4-1.

The **Data** may be **TPL** or a **Descriptor**. For more information, refer to “4.1.1 Data structure”.

For more information on data, refer to “4.2 TPL” and “4.3 Descriptor”.

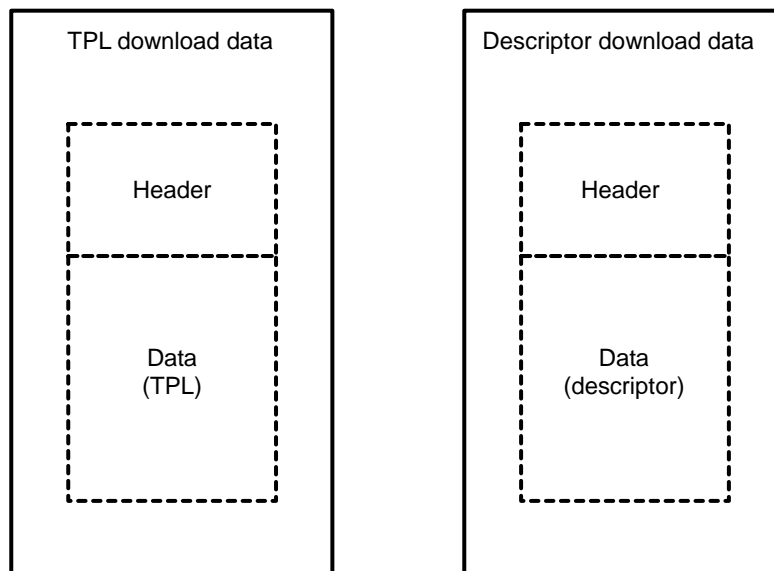


Fig. 4-1 Download data

4. Download Function

4.1.1 Data structure

Table 4-1 shows the structure of the download data.

“00h” in Table 4-1 is a fixed value. Fields appearing as “xxh” must be set.

Table 4-1 Data structure

Type	Offset	Setting	Value	Remarks	
Header	00h	TPL : D8h Descriptor : D9h	xxh	Set to suit data.	
	01h	Download data CRC value	xxh	Refer to “4.1.2 CRC” for CRC calculation method.	
	02h	Fixed value	01h		
	03h	Fixed value	01h		
	04h	TPL : 7F00h Descriptor : 7B00h	xxh	Set to suit data. (Offset 07h: MSB, 04h: LSB)	
	05h		xxh		
	06h		00h		
	07h		00h		
	08h	Download data size	xxh	Will be a multiple of 12 for TPL. (Offset 0Bh: MSB, 08h: LSB)	
	09h		xxh		
	0Ah		00h		
	0Bh		00h		
		0Ch	Fixed value	00h	
		0Dh	Reserved	00h	
		0Eh	Reserved	00h	
	0Fh	Reserved	00h		
Data	10h	Data	xxh	Maximum data size TPL: 192 bytes Descriptor: 1,012 bytes	
	:	:	:		
	:	:	:		
	:	:	:		

4.1.2 CRC

CRC (Cyclic Redundancy Check) is an error-detection method used for data transfers. The LSI uses CRC-8 (not CCITT CRC-8), and the generating polynomial (Bit 8 is not used) is as shown below. Fig. 4-2 shows the C language CRC calculation method.

Generating polynomial: $X^8 + X^2 + X^1 + X^0 = 2^8 + 2^2 + 2^1 + 2^0 = 0x07$

```

unsigned char Func(unsigned char *pDat, unsigned long dLen )
{
    unsigned char  crc;
    unsigned char  bit;
    unsigned long  index;

    crc = 0xFF;          ..... Initial setting

    for( index=0; index<dLen; index++) {
        crc ^= pDat[index];

        for( bit=0; bit<8; ++bit ){
            if( crc & 0x80 ){
                crc = (crc << 1) ^ 0x07;    ..... Highest-order Bit=1 processing
            }else{
                crc = (crc << 1);          ..... Highest-order Bit=0 processing
            }
        }
    }

    return crc;
}

```

Fig. 4-2 CRC calculation method

4. Download Function

4.2 TPL

TPL is a list of supported USB Devices used by the LSI in USB Host operations.

Embedded Host Compliance requires the inclusion of a TPL, and it must be set to acquire logos from certification body. For TPL inquiries or details, consult the certification body.

USB Devices failing to meet the standards set for the TPL are treated as unsupported Devices.

A default TPL is registered with the LSI. Create a TPL if the provision of another TPL is required.

The TPL is configured as shown in Table 4-2 and can include up to 16 settings (12-byte units) in list form.

Table 4-2 Data structure

Component	Size (Byte)	Setting value	Description	Default
idVendor	2	xxxxh	Set the value assigned by USB-IF.	0000h
idProduct	2	xxxxh	Set a number for product identification.	0000h
bcdDevice	2	xxxxh	Set a number for product version.	0000h
bClass	1	03h	Set the Class ID (03h).	03h
bSubClass	1	00h: No subclass 01h: Boot Protocol	Set 00h for Devices not supporting the boot protocol and 01h for Devices supporting the boot protocol.	00h
bProtocol	1	00h: None 01h: Keyboard 02h: Mouse	Set 01h when supporting keyboard only, and set 02h when supporting mouse only.	00h
bPower	1	00h: BUS powered 40h: Self powered	Set the power supply method.	00h
bSpeed	1	01h: Low speed [LS] 02h: Full speed [FS]	Set to 01h or 02h.	00h
Flag	1	xxxx xxx1b: idVendor xxxx xx1xb: idProduct xxxx x1xxb: bcdDevice xxxx 1xxxb: bPower xxx1 xxxxb: bClass xx1x xxxxb: bSubClass x1xx xxxxb: bProtocol 1xxx xxxxb: bSpeed	Select the enabled components. E.g.: 03h Enables idVendor and idProduct only. Devices not corresponding to idVendor and idProduct set are not recognized.	10h

4.3 Descriptor

The LSI requires a descriptor complying with USB standard to permit operation as a USB Device.

For more information, refer to “Device operation setting” described for USB Device function in the *S1R72U01 Technical Manual*.

4.4 Support Tools

This section describes the support tools and how to use them.

The following support tools are provided:

1. TPLCreateXXX.exe (“XXX” indicates version)

This tool can be used to create TPL download data. It provides support for the areas enclosed within the solid border in Fig. 4-3.

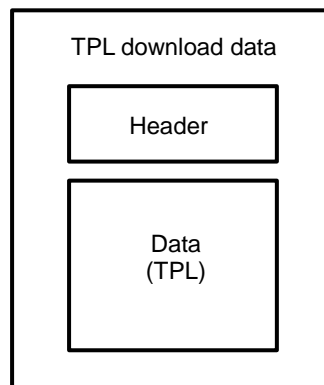


Fig. 4-3 Supported areas

4. Download Function

2. HeaderMakerXXX.exe (“XXX” indicates version)

This tool can be used to add Header to data (Descriptors) and create Descriptor download data.

Data must be created beforehand when using this tool. Any filename is acceptable (with the extension “.bin”).

This tool provides support for the areas enclosed within the solid border in Fig. 4-4.

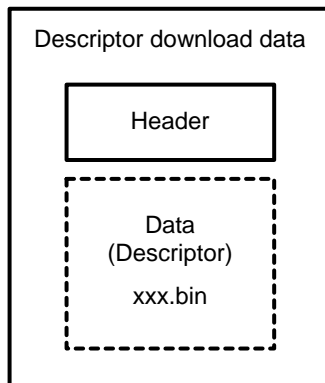


Fig. 4-4 Supported areas

4.4.1 TPL tool

This section describes how to use the TPL support tool.

Step 1: Launch TPLCreateXXX.exe.

Step 2: Select **File** → **New** to set **TPL Value** and **Code**, as shown in Fig. 4-5.

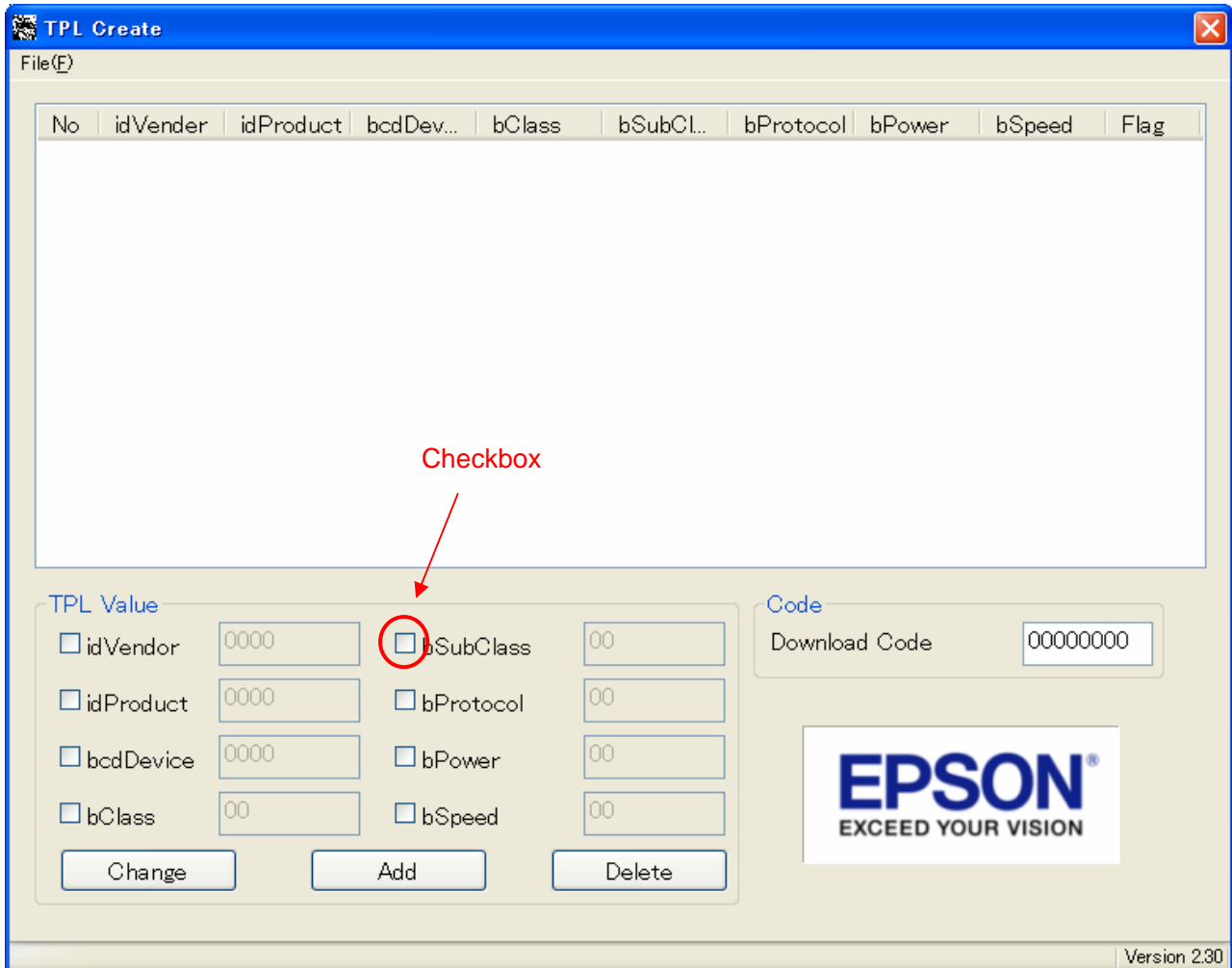


Fig. 4-5 Main screen

Step 3: Check the setting items under **TPL Value** before making any setting values. (For more information on TPL structure, refer to “4.2 TPL”.)

4. Download Function

Step 4: Set “7F00” for **Download Code**.

Step 5: Once settings are complete for one data structure, click **Add**.

Check that the data structure set appears in the list at the top of the screen.

Fig. 4-6 shows the display after setting “03” for **bClass** in **TPL Value** and clicking **Add**.

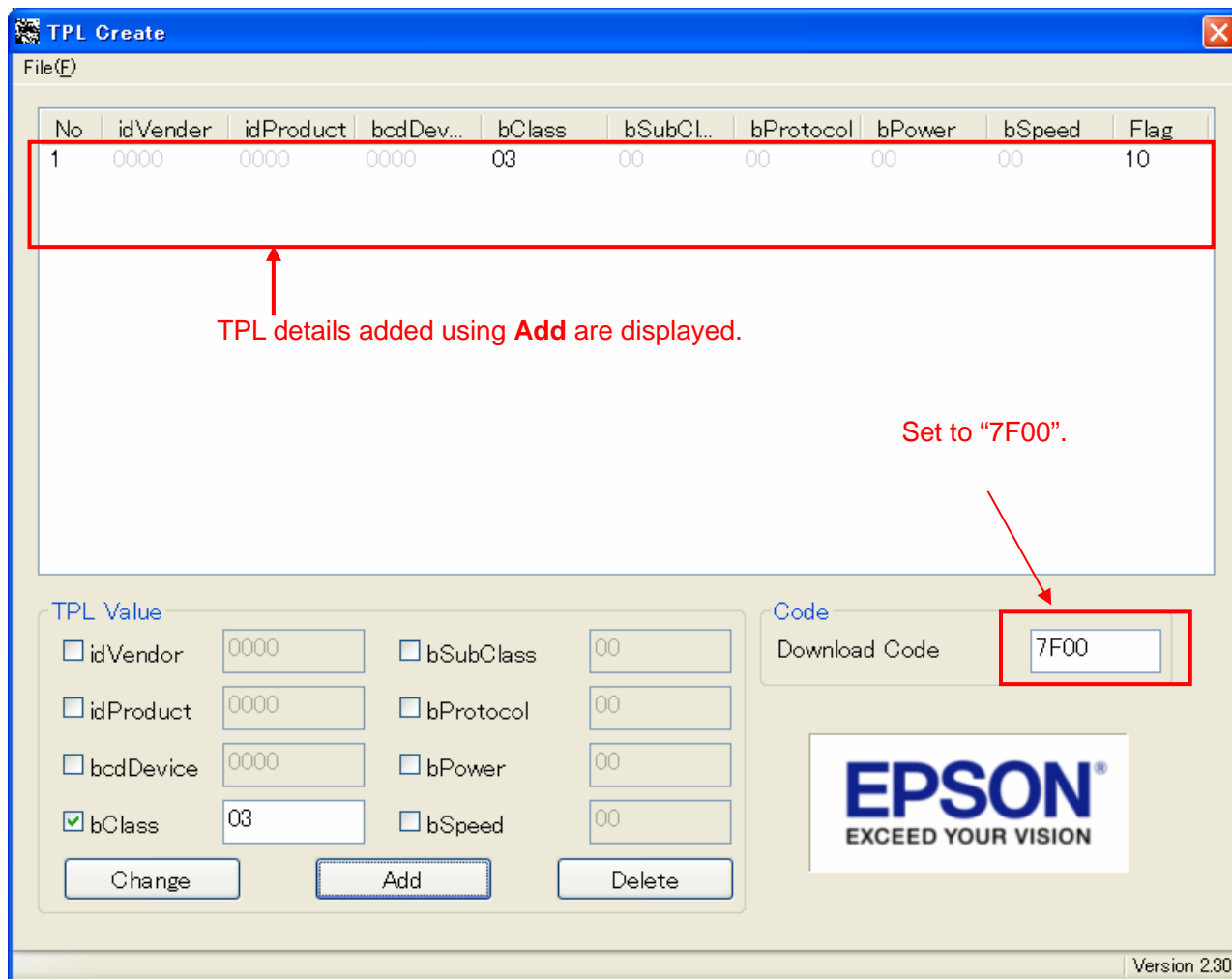


Fig. 4-6 Download data creation example

Step 6: Repeat steps 3 to 5 to set the required TPLs.

Up to 16 TPLs can be set.

Step 7: Select **File** → **Save** to save the TPLs created.

All data added using **Add** will be saved as TPL download data.

4.4.2 Descriptor tool

This section describes how to use the descriptor support tool.

Step 1: Launch HeaderMakerXXX.exe.

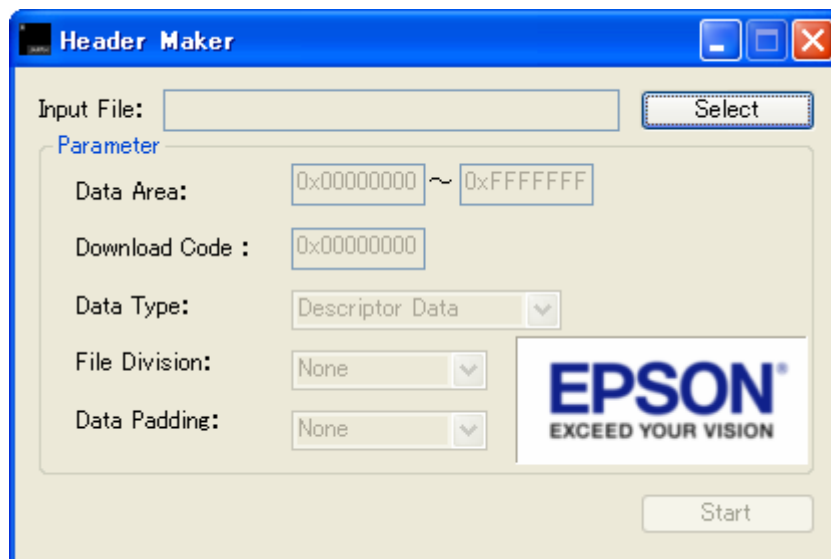


Fig. 4-7 Main screen

Step 2: Click **Select** and specify the descriptor file.

The specified file should be backed up, since future saves will overwrite it.

Step 3: Set the **Parameter** as shown in Table 4-3.

Table 4-3 Parameter settings

Parameter	Setting
Data Area	–
Download Code	7B00h
Data Type	Descriptor Data
File Division	None
Data Padding	None

Step 4: Click **Start**.

The header is added to the file specified in **Input File**. The descriptor download data is created.

5. NSF Function

5. NSF Function

The USB Host for the LSI incorporates an NSF function to notify the Main CPU of errors occurring in the USB. The NSF notifies the Main CPU via a dedicated pin on the LSI. For more information on the pin and status, refer to “Notification Function” in the *S1R72U01 Technical Manual*.

5.1 TPL

This indicates an unsupported Device has been detected.

If this notification does not function correctly, check “2.5.1.2 USBH: unsupported device”.

5.2 ManyDev

This indicates two or more Devices have been detected.

If this notification does not function correctly, check the operating status using “2. History Display Function”.

5.3 ManyHub

This indicates a Device with two or more HUBs has been detected.

If this notification does not function correctly, check the operating status using “2. History Display Function”.

5.4 VBUS_Cur

This indicates an overcurrent has been detected in VBUS.

Note that this notification indicates that system faults or malfunction may result from overcurrents.

Check for the following system problems.

- Overall system (including LSI) malfunction due to overcurrent.
- VBUS consumption in circuits other than USB.
- Use of self-powered USB Device.
- VBUS power SW is externally attached. For information on the VBUS power SW, refer to the *S1R72U01 Data Sheet*.

Revision History

Attachment-1

Rev. No.	Date	Page	Category	Revision details (including previous details) and reason
Rev. 1.00	03/05/2009	All	New	Newly established

AMERICA

EPSON ELECTRONICS AMERICA, INC.

2580 Orchard Parkway,
San Jose, CA 95131, USA
Phone: +1-800-228-3964 FAX: +1-408-922-0238

EUROPE

EPSON EUROPE ELECTRONICS GmbH

Riesstrasse 15, 80992 Munich,
GERMANY
Phone: +49-89-14005-0 FAX: +49-89-14005-110

ASIA

EPSON (CHINA) CO., LTD.

7F, Jinbao Bldg., No.89 Jinbao St.,
Dongcheng District,
Beijing 100005, CHINA
Phone: +86-10-6410-6655 FAX: +86-10-6410-7320

SHANGHAI BRANCH

7F, Block B, Hi-Tech Bldg., 900 Yishan Road,
Shanghai 200233, CHINA
Phone: +86-21-5423-5522 FAX: +86-21-5423-5512

SHENZHEN BRANCH

12F, Dawning Mansion, Keji South 12th Road,
Hi-Tech Park, Shenzhen 518057, CHINA
Phone: +86-755-2699-3828 FAX: +86-755-2699-3838

EPSON HONG KONG LTD.

20/F, Harbour Centre, 25 Harbour Road,
Wanchai, Hong Kong
Phone: +852-2585-4600 FAX: +852-2827-4346
Telex: 65542 EPSCO HX

EPSON TAIWAN TECHNOLOGY & TRADING LTD.

14F, No. 7, Song Ren Road,
Taipei 110, TAIWAN
Phone: +886-2-8786-6688 FAX: +886-2-8786-6660

EPSON SINGAPORE PTE., LTD.

1 HarbourFront Place,
#03-02 HarbourFront Tower One, Singapore 098633
Phone: +65-6586-5500 FAX: +65-6271-3182

SEIKO EPSON CORP.**KOREA OFFICE**

50F, KLI 63 Bldg., 60 Yoido-dong,
Youngdeungpo-Ku, Seoul 150-763, KOREA
Phone: +82-2-784-6027 FAX: +82-2-767-3677

SEIKO EPSON CORP.**SEMICONDUCTOR OPERATIONS DIVISION****IC Sales Dept.****IC International Sales Group**

421-8, Hino, Hino-shi, Tokyo 191-8501, JAPAN
Phone: +81-42-587-5814 FAX: +81-42-587-5117